

## Recent addition to NH register of historic places

CONCORD — The New Hampshire Division of Historical Resources and the State Historical Resources Council have added five properties to the New Hampshire State Register of Historic Places. In addition to their architectural significance, each has played important roles in the development of their communities.

Designed by E.C. Cummings and built in 1905, the Academic Building on the campus of Brewster Academy in Wolfeboro exhibits the strong symmetry associated with Classical Revival architecture. A steel structure clad in tan brick, the building's notable features include paired Ionic columns supporting the gable-front portico at its entrance.

Other buildings recently added include the Gorham Congregational Church and Parsonage constructed in 1862 and renovated in 1904, the First Congregational Church in Littleton built in 1833 and renovated in 1874, the Frost Free Library in Marlborough built in 1865-66 from locally cut granite, and Pittsburg Town Hall built in 1883.

To nominate a property to the New Hampshire State Register of Historic Places, research the history of the property and document it on an individual inventory form from the New Hampshire Division of Historical Resources. Having a property listed in the Register does not impose restrictions on property owners. For more information, visit [nh.gov/nhdhr](http://nh.gov/nhdhr), or call 603-271-3483.

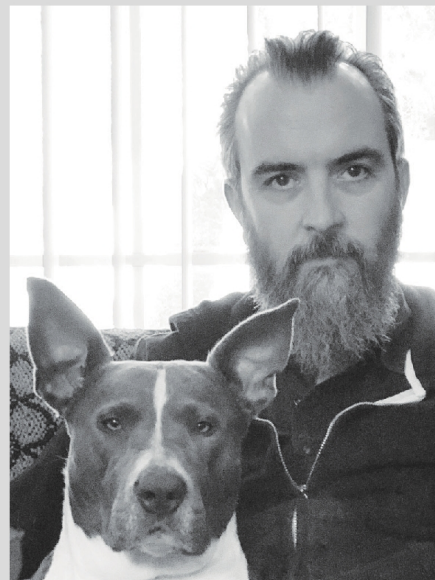
## Public input sought for statewide pedestrian and bike plan

GILFORD — Those interested in improving walking and bicycling conditions in the Lakes Region are invited to a public meeting hosted by the Lakes Region Planning Commission to discuss NHDOT's Statewide Pedestrian and Bicycle Transportation Plan at Gilford Public Library, 31 Potter Hill Road, on Wednesday, Sept. 25, from 6-8 p.m.

At the meeting, NHDOT's consultant team, led by Alta Planning + Design from Cambridge, Mass., will provide an overview of the planning effort, the results of analysis of current on-road pedestrian and bicycle facilities, and provide a blueprint of available infrastructure improvements that could enhance safety and connectivity for pedestrians and cyclists. Participants will also have the opportunity to mark up large-scale maps of the Lakes Region and other regions to let the planning team know which roadways and intersections need improvements in the future.

To learn more about the project, visit [www.NHpedbikeplan.com](http://www.NHpedbikeplan.com). Available there is a 16-question survey about walking and bicycling interests and habits, and an interactive input map to tell the planning team about challenging places for walking and bicycling.

## Scriven Arts Colony extends season



The Scriven Arts Colony has just extended its season. On Sept. 6, at 7 p.m., filmmaker Ian McCulloch will present his 19-minute piece, 'Wallace,' and read the related short story, 'Lemon 29,' written before he made the film. McCulloch is a Gilmanton native and a Los Angeles screenwriter who's contributed to the television shows 'Yellowstone' and 'Chicago Fire.' His dog will not be in attendance. The evening will be held at 452 New Hampshire Route 140 in Gilmanton. (Courtesy photo)

Serving Laconia Daily  
**Mr. C's Taxi**  
 527-8001  
 OPEN AT 5AM DAILY

**FRENCH HOME IMPROVEMENTS**  
 Serving the Lakes Region & Beyond since 1971  
 Replacement Windows • Roofing  
 Call Jim at **524-8888**  
[www.frenchhomeimprovements.com](http://www.frenchhomeimprovements.com)

MAKING SUMMER LAST

**TRUST WORTHY HARDWARE**  
 603.524.1601  
 1084 UNION AVE, LACONIA | PAUGUS BAY (Accessible by water)  
 For all your home care needs with friends that are experts to guide you through!

## Climate Citizens Lobby to explore no-till agriculture

MEREDITH — No-till agriculture is one part of a three-part strategy for farming. This is the subject of the book 'Growing a Revolution' by David R. Montgomery. This method puts carbon back into the soil so it doesn't go into the air and combine with oxygen to make carbon dioxide. Montgomery shows that farming this way helps control climate change.

The next meeting of the Lakes Region chapter of the Citizens' Climate Lobby will be Wednesday, Sept. 18, at the Meredith Community Center, 1 Circle Drive, at 6 p.m.



- Annin Flags 3x5"-5x8" Tough Tex US Flag
- Pleated Fan Flap
- NH State Flags



Weber Grills



Large Assortment of Ball Canning Supplies



Kingsford Original Charcoal Briquettes Natural Ingredients

## Home Instead Wolfeboro to participate in Walk to End Alzheimer's



Home Instead Wolfeboro is raising money and awareness for Alzheimer's by participating in the Sept. 22 Walk to End Alzheimer's in Portsmouth. The last time they walked, they raised over \$2,000. Their goal this year is to raise \$2,500. Above, from left, are Cindy Eichling, owner; Annie St. James; and Noelle Emerson in the back row; and Andrea Ouellette and Polly Jeffers in the front. To learn more, visit [www.tinyurl.com/WboroALZwalk](http://www.tinyurl.com/WboroALZwalk). (Courtesy photo)