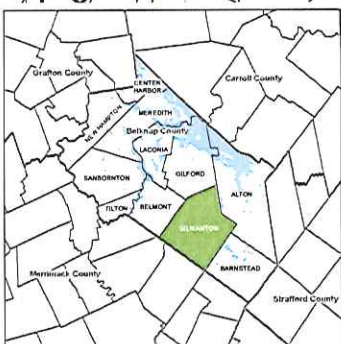
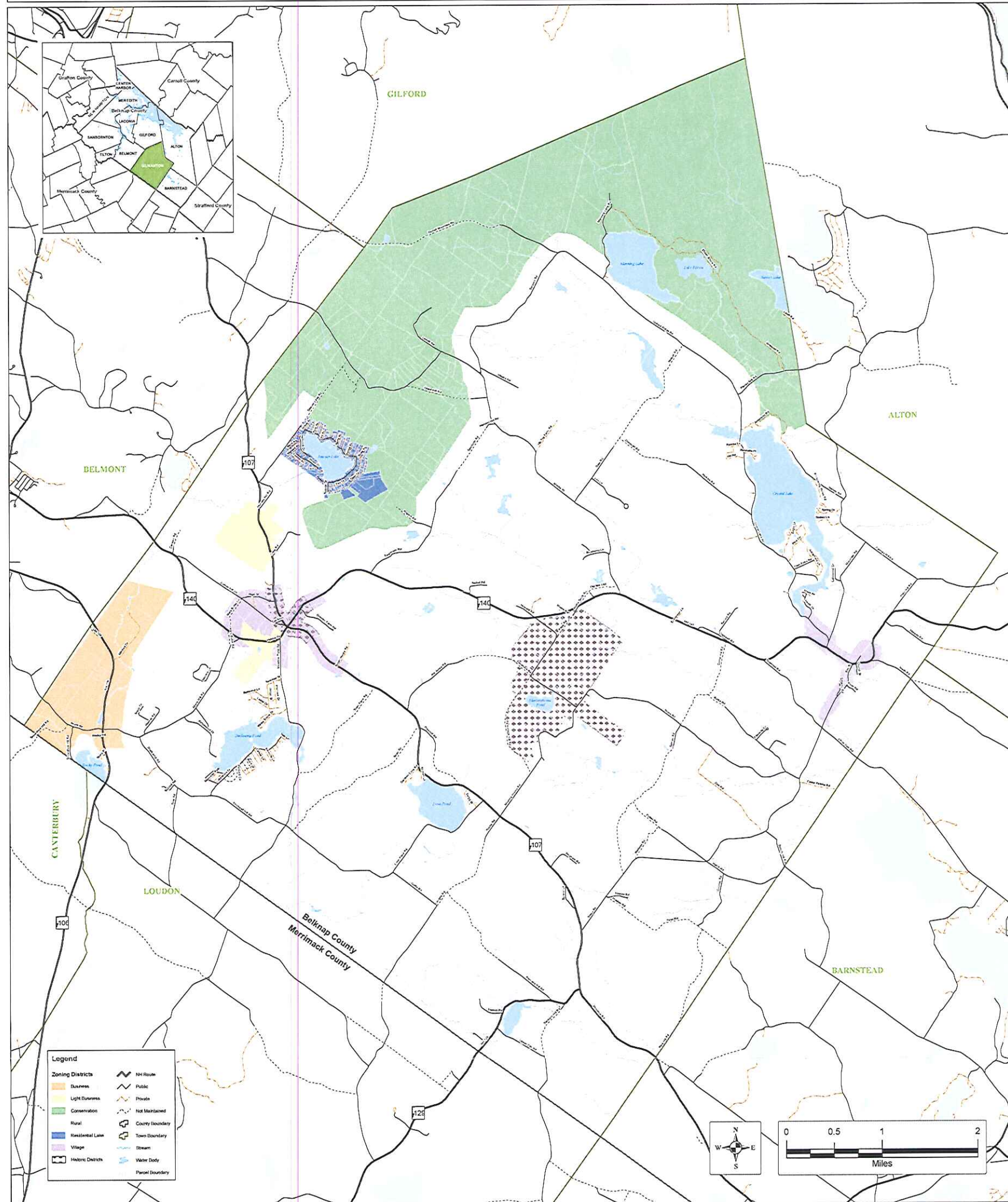
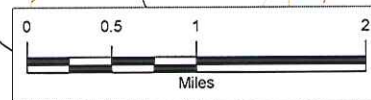
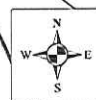


Zoning: 2010

Gilmanton, NH



Legend	
Business	NH Route
Light Business	Public
Conservation	Private
Rural	Not Maintained
Residential Lake	County Boundary
Village	Town Boundary
Historic Districts	Stream
	Water Body
	Parcel Boundary



Zoning created by Cartographics Associates, Inc. 2010. Parcel Boundaries from Cartographics Associates, Inc. 2010.
 Base feature datasets, including hydrography, roads, and political boundaries, provided through NH GRANIT at Complex Systems
 Research Center (CSRC). Neither LRPC nor CSRC make any claim to the validity or reliability or to any implied uses of these data.
 For planning purposes only.



Lakes Region Planning Commission
 103 Main St. Ste. #3
 Meredith, NH 03253
 603.279.8171 | www.lakesrpc.org