

1. JACOB SAUNDERS had lot 85 1st division in 1817 . The farm below GEORGE PITMAN on the left . He was in the War of 1812 . He was born in 1790 and died in 1852 . His wife ABIGAIL McNEAL was born in 1787 and died in 1875 . Buried in the PITMAN Cem .

Children of Jacob

1. ELIZA , b. 1824 , d. 1844

2. SAMUEL SAUNDERS had lot 38 1st division in 1820 . His wife was SALLY YOUNG .

3. WILLIAM SAUNDERS lived in Barrington N.H. 1790 town census 1 boy and 1 girl . His wife was ABIGAIL MILLS .

Children of William

1. BETSEY , b. 1840 , d. 1918  
2. GEORGE , b. 1834 , d. 1891

## SCRIGGIN

1. WILLIAM SCRIGGIN lived below the HARTSHORN farm on the left , in 1810 . He was born in 1766 and died in 1838 . His 1st wife SALLY was born in 1770 and died in 1811 . He married BETSEY WELCH in 1816 . Buried in a cemetery on the farm . The SCRIGGIN lot .

Children of William

1. JOSHUA , had the farm in 1839 . Moved to Iowa .  
2. BRADBURY , had part of the farm . His wife was HANNAH DAVIS , she died in 1847 .  
3. WILLIAM , lived in Sandwich N.H.  
4. CHARLES , lived in Sandwich N.H.

2. JONATHAN SCRIGGIN probably buried in the Cem . with WILLIAM . Old Mrs. SCRIGGIN died in 1823 .

## SEWARD

1. GEORGE SEWARD son of JOSEPH SEWARD of Portsmouth N.H. He settled on lot 89 2nd division in 1800 , known as the PARKEY farm . He was born in 1771 and died in . His wife SARAH HUCKINS was born in 1773 . He did business with SIMEON LOUGEE .

## Children of George

1. EUNICE , b. 1797 m. OLIVER DENNETT
2. MEHITABLE , b. 1805 , d. 1817
3. MARY K , b. 1807 m. JOSHUA SEWARD
4. JOSEPH , b. 1801 m. EUNICE GOERNSEY Had part of his father farm in 1823 .
5. SARAH , b. 1803 , d. 1877 m. JOHN ADAMS
6. LUCY A , b. 1817 m. JOHN REED
7. GEORGE W , b. 1813 m. LUCY DERBY
8. RUTH , b. 1811 m. NATHANIEL WILSON
9. ELIZA , b. 1809 m. JAMES BARNES
10. NANCY , b. 1820 m. JABEZ FREDERICK
11. NICHOLAS , b. 1799 His wife NANCY BOYNTON . He had father farm in 1827 . He bought the old BERRY school in 1816 for \$7.00 . He moved to Ripon Wisconsin .

## Children of Nicholas

- a. WILLIAM ,
- b. NANCY ,
- c. CHARLES ,
- d. GEORGE H , b. 1819 , d. 1903

## SEWARD

2. GEORGE H SEWARD son of NICHOLAS SEWARD lived in Alton by the Halfmoon pond store . He was born in 1819 and died in 1903 . His 1st wife was LUCETTE DIKE . His 2nd wife was EMELINE WILLIAMS , born in 1817 and died in 1888 . Buried in the WILLIAMS cemetery on White Oak road .

## Children of George H

1. EDGAR , m. JENNIE SALTMARSH

## Children of Edgar

a. GRACE ,

b. WALTER , b. 1891 , d. 1970

2. EDNA ,

3. ORRIN ,

4. ELLA ,

5. LAURA ,

6. WILLIAM ,

7. THOMAS , b. 1850 , d. 1933 His 1st wife MARY A CHESLEY , b. 1854 , d. 1916 . His 2nd wife CAROLINE VARNEY , b. 1866 , d. 1936 . He lived in the TUTTLE place on Peachum road first . Later moved to the Center . Ran TUTTLE Saw mill until it burnt in 1890 . Then ran the Saw mill in the Center until he died .

## Children of Thomas

a. HARRY , b. 1874 , d. 1955 His 1st wife MABEL MARSH , b. 1877 , d. 1936.

m. HATTIE GARLAND later . Help run his father Saw mill . Lived at his father place .

b. ALICE , b. 1884 m. ARTHUR TASKER

Still lives in the SEWARD place.

## SHACKFORD

1. WILLIAM SHACKFORD of Newington N.H. came up to Barnstead to view the meeting house built in 1730 in 1749 .
2. Capt. SAMUEL SHACKFORD of Newington N.H. owned lot 8 1st division in 1778 . His wife was ELIZABETH RING .

## Children of Capt Samuel

1. JOSIAH , b. 1767 , d. 1843 His wife LYDIA DENNETT , b. 1773 , d. 1859 . He got lot 80 1st division in 1800 . He lived on the farm on SHACKFORD corner hill on the left . He was a farmer , a drover and a merchant . Buried in a cemetery up behind the house , the stones are gone .

## Children of Josiah

- a. JOSIAH R , b. 1796 , d. 1874
- b. LYDIA , b. 1798 , d. 1889 M. JOSEPH FRENCH . He ran a store .
- c. SUSAN , b. 1803 , d. 1841
- d. SETH , b. 1811 , d. 1888
- e. WILLIAM , b. 1806 , d. 1886 His wife was MARY DAME . He lived at the PARENT place . A millwright . He had a cabinet shop at SHACKFORD corner .

## SHACKFORD

2. JOSIAH R SHACKFORD son of JOSIAH SHACKFORD lived on his father farm . A farmer and town officer . He was born in 1796 and died in 1874 . His wife was MARY GARLAND . Buried in a cemetery on the farm , stones are gone .

## Children of Josiah R

1. MARY A , b. 1822 , d. 1842
2. SAMUEL G , b. 1818 , d. 1885 His wife MARGARET FOSS , b. 1816 , d. 1859 . He lived in the farm on top of the hill in 1851 . He ran the hotel in the Center later . He was a cordwainer . Served in the Civil war. Buried in the Center cemetery .

## Children of Samuel G

- a. ESTA , b. 1833 , d. 1921
- b. MARY A , b. 1853 , d. 1931
- c. WILLIAM H , b. 1849 , d. 1899 His wife was AUGUSTA SMART . He lived at ARNOLD RIEL place . Served in Civil war . Ran hotel .

## Children of William H

1. ELMA , b. 1879 , d. 1936
- d. ALBERT F , b. 1846 , d. 1927 His wife AUGUSTA HUNTRESS , b. 1850 , d. 1889 . He lived at LINWOOD GOLDEN place . A shoecutter .

## Children of Albert

1. EUGENE , b. 1873 , d. 1941
2. HARRY , b. 1875 , d. 1928 . He ran a dry good store in the Center . He delivered goods around town .

## SHACKFORD

3. SETH SHACKFORD son of JOSIAH SHACKFORD lived in the farm on top of SHACKFORD hill . He was a farmer , a merchant and was in the N.H. legislature . He had part of PEAVEY mill in 1837 . He was born in 1811 and died in 1888 . His 1st wife HARRIETT HILL was born in 1813 and died in 1864 . His 2nd wife ROXANNE NUTE was born in 1823 and died in 1873 . He married PAMELIA PENDERGAST in 1873 . Buried in a cemetery on the farm .

## Children of Seth

1. HORATIO H , b. 1832 , d. 1901 His wife MARY HOLMES  
b. 1843 , d. 1887 . He lived by the Cem. in the Center.  
Lived THOMAS P HODGDON place later . Served in the Civil  
war . Buried in the MUNSEY cemetery up beyond the PITMAN  
corner on the right .

## Children of Horatio

a. ABBIE , b. 1865 , d. 1954

2. AMASA , a teacher and photographer . His wife was  
CLARA A LOUGEE . Had father farm .

## Children of Amasa

a. JOHN ,

3. LYDIA A , b. 1837 , d. 1923 m. CHARLES DOW . The  
mother of MILDRED CROSSETT .

## SINCLAIR

1. RICHARD SINKLAIR of Newington N.H. settled on the Province road on lot 64 2nd division in 1767 . Up on route 107 across from KIMBALLS place . He built the first Saw mill in 1767 on Beauty pond stream . Later called the DENNETT brook . He served in the French and Indian war and the Rev. war . The town paid him \$200 to let his slave STEPHEN HOOD to go in the Rev. war . He hire soldier for the Rev war in 1778 . Town moderator and assessor . 1790 town census 2 boys and 1 slave . He had the first store in town . He had an iron works and Saw mill on the outlet to Suncook pond . Town selectman from 1775 to 1784 . He was born in 1731 and died in 1813 . He married POLLY CILLEY in 1752 . Buried in a cemetery on the farm , I cant find the old stones . Part of his house was moved to the Parade , the LES GRAY place .

## Children of Richard

1. DAVID , b. 1770 , d. 1853 His wife SALLY BATCHELOR  
b. 1775 , d. 1849
2. NANCY , b. 1766 , d. 1856 m. OBEDIAH EASTMAN
3. RICHARD Jr , b. , d. 1819
4. BRADBURY , killed in Rev. war in 1778 . m.  
SARAH BUNKER in 1777 .
5. JOHN , served in Rev. war . Moved to French Creek  
Penn .
6. JOSEPH , served in Rev. war . Moved to Perry, Ohio .
7. JOSHUA , served in Rev. war in 1777 .
8. SAMUEL , served in Rev. war in 1777 .

## SINCLAIR

2. Capt RICHARD SINKLAIR Jr , lived with his father . Capt. of the N.H. 10 reg. in 1776 . He was in the battle of BUNKER Hill in 1775 and at West Point in 1780 . He signed a petition to make JOHN TASKER a justice of the peace in 1777 . He signed a petition to built a bridge over the Suncook river in 1792 on the Province road . 1790 town census 1 boy and 3 girls . He moved to French Creek Penn . and died there in 1819 . His wife BETSEY HODGDON , was born in 1765 and died in 1840 . She is buried in the old Parade cemetery . He left town around 1800 .

## Children of Capt Richard

1. POLLY C , b. 1806 , d. 1870 m. ABRAHAM BUNKER
2. CHARLES G , b. 1793 , d. 1834 His wife was MARTHA NORRIS . He was wounded in war of 1812 , at Fort Erie . He was a member of the Parade church .

## Children of Charles

- a. JOHN G , b. 1826 Moved to Landaff N.H. He made starch in Bethlehem in 1847 . He married TAMAR CLARK in 1847 .

## Children of John G

1. CHARLES A ,
2. EMMA S ,
3. MARTHA ,

3. Col. JOSEPH SINKLAIR brother to RICHARD SINKLAIR . He was in the French and Indian war and the Rev. war . 1790 town census 1 boy . In 1778 he was to help find a place for a church . Buried in a cemetery on the farm of RICHARD SINKLAIR .



## SINKLAIR

4. JOHN SINKLAIR son of RICHARD SINKLAIR . He bought the Saw mill and Iron works on the outlet of Suncook pond in 1780 . He paid 180 pounds for it . Justice of the peace in 1777 . 1790 town census 1 boy and 1 girl .

## Children of John

1. DAVID , he signed a petition to put a bridge over the Suncook river in 1792 .

## STEVENS

1. SAMUEL STEVENS lived on lot 86 2nd division in 1772 on Beauty hill , on the school house lot . He came from Newmarket N.H. He signed the association test in 1776 . 1790 town census 1 boy and 3 girls . SARAH his wife had a house in lot 87 2nd Div. in 1817 . I think they are buried in the old Beauty hill cemetery .

## Children of Samuel

1. JOHN , had his father farm in 1798 . A child of his died in 1815 .
2. OLIVE , b. 1783 , d. 1843
3. GEORGE , served in war of 1812 .

## SWAIN

1. JOHN SWAIN of New Durham N.H. He lived on lot 84 1st division in 1800 . The GEORGE PITMAN place . He had lot 42 1st division in 1787 . He was born in 1751 and died in 1821 . His wife ABIGAIL was born in 1757 and died in 1823 . Buried in Crown Point Cem .

## SMART

1. WINTHROP SMART of Lee N.H. He owned lot 19 1st division in 1772 , the FRED EVANS farm . Served in the Rev. war at the battle of Bennington Vt in 1777 . Town selectman in 1775 , 1778 and 1782 . He moved to Ossipee N.H. and his buried there . He signed the association test in 1776 .

## Children of Winthrop

1. WINTHROP Jr , lived in Ossipee N.H. His wife SALLY  
b. 1784 , d. 1837 .

## Children of Winthrop Jr

a. MOSES , killed in 1836 age 27

b. STEPHEN , b. 1805 , d. 1832

2. NATHANIEL , lived at the KIDDER place in the Center in 1827 . His wife BETSEY owned the Saw mill on the PIENO stream in 1875 . They moved to Ossipee N.H.

## Children of Nathaniel

a. NATHANIEL T , b. 1823 , d. 1887 . His wife MARIETTE DAGGETT , b. 1820 , d. 1886  
Lived KIDDER place . Buried in TUTTLEBORO  
Cem .

## Children of Nathaniel T

1. CHARLES , b. 1853 , d. 1858

2. MARY A , b. 1849

3. HATTIE , b. 1859 , d. 1927

m. CHARLES I ROSS

4. GEORGE , b. 1857

5. AUGUSTA , b. 1878 , d. 1911

6. FREDERICK , b. 1849 He lived  
in Effingham N.H.

3. JOHN T G , b. 1799 , d. 1863

## SMART

2. JOHN T G SMART son of WINTHROP SMART lived on the road to BREWSTER on the left from TUTTLEBORO . He was born in 1799 and died in the Civil war in Louisiana in 1863 . His wife PRUDENCE was born in 1804 and died in 1858 . They are buried in the JOHN TUTTLE cemetery .

## Children of John T G

1. MARY A , b. 1839 , d. 1858
2. ABIGAIL , b. 1825 , d. 1832
3. CURTIS , b. 1847
4. ELIZA , b. 1841
5. JOSEPH T , b. 1844 and died in the Civil war in 1864 .
6. JOHN M , b. 1844 and died in the Civil war in 1862 .
7. SAMUEL J , b. 1833 a Lient. in the Civil war and died in camp in 1864 .

## SHAW

1. WILLIAM SHAW lived in CHARLES BROWN place on Beauty hill in 1856 . He was born in 1790 and died in 1861 . His wife NANCY was born in 1792 and died in 1872 . Buried in the old Parade cemetery .

## Children of William

1. WILLIAM , b. 1838 , d. 1896 His wife EMILY BERRY . He was in the Civil war .

## Children of William

- a. HARRY ,
  - b. FLORANCE ,
2. JOHN SHAW had a blacksmith shop in the Center in 1841 , across from CHAPMAN place .

## SMITH

1. JOHN SMITH 1790 town census 1 boy and 1 girl .
2. DANIEL SMITH owned land and mill privilege in 1787 by KELLEY brook . Next to the Province road and Pittsfield town line . He was a cordwainer by trade . He had part of the BUNKER saw mill where the lace factory is now in 1799 . 1790 town census 7 boys and 1 girl .

## Children of Daniel

1. MARY , b. 1803 , d. 1872
  2. EMERSON , lived in CALEF WEBSTER place in 1838 .  
He married BETSEY CHAPMAN in 1813 .
  3. MOSES , moved to Starksboro Vt by ox team in  
1816 .
3. JAMES SMITH had 75 acres of lot 68 2nd division near LOUGEE pond in 1810 .
  4. EDWARD SMITH had lot 112 2nd division in 1793 next to the Gilmanton town line .
  5. ROBINSON SMITH had lot 112 1st division in 1787, over beyond LOCKE corner .

## SWETT

1. THOMAS R SWETT was hog reaves for Barnstead in 1778 . He was born in 1761 and died in 1849 . He married SARAH PRESCOTT in 1816 . Buried in the Pittsfield cemetery .

## SNELL

1. THOMAS SNELL of Durham N.H. He had land in Barnstead in 1730 .

## Children of Thomas

1. SAMUEL , lived on lot 43 1st division in 1780 . Where the KIBBE live across from KRAUSE place . 1790 town census 3 girls . They are buried in a cemetery by the YELLE place.
2. JOHN , lived in Lee N.H.
3. LILLIAS , m. SAMUEL CLARK
4. MARY , m. JOSEPH BICKFORD
5. ABIGAIL , b. 1761
6. THOMAS , b. 1740 , d. 1823 . He lived on lots 4 and 5 1st division in 1780 , down by the ADAMS pond camp . He signed the association test in 1776 . 1790 town census 3 boys and 4 girls . He married ABIGAIL FROST . Buried in a cemetery on the farm .

## Children of Thomas

- a. ABIGAIL , b. 1774 , d. 1860 m. SIMEON MESERVE
- b. JOANNA , b. 1780 , d. 1848
- c. MARY ,
- d. CLEMENT , had lot 52 2nd division in 1821 .
- e. JOSIAH , b. 1760 , d. 1835
- f. THOMAS Jr , b. 1776 , d. 1855 His wife HANNAH MESERVE . Lived father farm .

## Children of Thomas Jr

1. GEORGE ,

## SNELL

2. JOSIAH SNELL son of THOMAS SNELL lived on the north end of lot 4 and 5 1st division in 1792 . Behind the FRED GOODRICH place . He was born in 1760 and died in 1835 . His wife SARAH died in 1826 . Buried with there father .

## Children of Josiah

1. MARY , had part of her father farm .
2. AARON , b. 1800 , d. 1870 He got his father farm in 1840 . His 1st wife POLLY EMERSON died in 1827 . His 2nd wife MARY NUTTER , b. 1801 , d. 1883 . They are buried in the South Barnstead cemetery .

## Children of Aaron

- a. CELISSA , b. 1850
- b. MERCY , b. 1839
- c. JANE , b. 1839 , d. 1915 m. CHARLES BERRY . Lived on the farm .
- d. HANNAH , b. 1841 m. JOSEPH PRIME
- e. MARY A , b. 1832 , d. 1911 m. JAMES STEVENS
- f. CLARA , b. 1857 , d. 1920

## STILES

1. MOSES STILES ran the store in the Parade .
2. DANIEL STILES ran the store in the Parade . He lived in a house on lot 57 2nd division in 1837 . Across from TUTTLES place . His wife was MARTHA STILES .

## Children of Daniel

1. WILLIAM , b. 1827 , d. 1850

## STRAW

1. EZRA STRAW lived on 100 acres of the JOHN CATE plan in 1790 .  
His place was down behind the DUDLEY cemetery about a half mile .  
The farms are gone now . 1790 town census 6 boys and 4 girls .  
He died in 1826 . His wife was MARION STRAW . I think they are  
buried in the cemetery below the BERRY school , the old stones.

## Children of Ezra

1. EZRA Jr , had part of his father farm in 1807 .  
He married HANNAH COLBATH in 1823 .
2. SAMUEL , b. 1793 , d. 1881
3. JOSEPH , had part of his father farm in 1815 . Down  
behind CAP HILLSGROVE place , out in the woods .
4. SIMON , b. 1803 , d. 1887 His wife SALLY DUDLEY ,  
b. 1803 , d. 1883 . He lived at BOB CARR place in  
Alton N.H.

## Children of Simon

- a. HORACE , b. 1838 , d. 1840
- b. GEORGE , b. 1841 , d. 1901 His wife  
MARILLA ALLEN , b. 1833 , d. 1921 .  
Buried in the BERRY cemetery .

*C. Thomas info. on pg. 296*

2. AARON STRAW lived down by the PITMAN cemetery . He married  
EUNICE PITMAN . She was born in 1777 and died in 1857 .

## Children of Aaron

1. DENNIS , lived in the place across from GRAU  
in 1856 . He built the new PITMAN school in 1869 .
2. SARAH , m. LOUGHE PITMAN in 1826 .
3. BETSEY , b. 1802 , d. 1897 m. DANIEL PITMAN

## STRAW

2. SAMUEL STRAW son of EZRA STRAW had his father farm in 1815. In back of the DUDLEY cemetery . He was born in 1793 and died in 1881 . His wife LIZZIE EASTMAN was born in 1795 and died in 1878 . They are buried in a cemetery below the BERRY school house on the left .

## Children of Samuel

- Belongs on pg. 295*
1. MARY , died in 1857
  2. MEHITABLE ,
  3. ELIZA , b. 1824 , d. 1838
  4. CHARLES H , b. 1832 , d. 1911 His wife was MARY STRAW . Lived at CAP HILLSGROVE place .
  5. THOMAS S , b. 1814 , d. 1882 His 1st wife MERCY b. 1810 , d. 1856 . His 2nd wife LOUISE HILL , b. 1827 , d. 1901 . They lived on the NASH place in 1856 . Buried in the Gilmanton cemetery .

## Children of Thomas

- a. SARAH , b. 1863
- b. CLARA , b. 1862 , d. 1949 m. LYMAN AYERS
- c. GEORGE , b. 1853
- d. EMELINE , b. 1859
- e. ABBY , b. 1861
- f. MARY , b. 1858
- g. SIMON , b. 1866
- h. LAURA , b. 1868
- i. ALBA , b. 1860 , d. 1940 His wife CELIA TEBBETT . Had father farm .

## Children of Alba

1. CECIL , b. 1916 , d. 1966



## TASKER

1. JOHN TASKER of Madbury N.H. settled on lot 1 , 2 and 3 1st division in 1763 . He was one of Barnstead first settlers . He owned all the land around ADAMS pond also . He was justice of the pease . In 1769 he was put in charge of Barnsteads timber and meadows . He bought many lots in town at auctions . He owned about 1600 acres of land in town . He was a farmer and blacksmith . He owned a Saw mill and Iron works on the outlet of Wild Goose pond in 1780 . He signed the association test in 1776 . Town selectman in 1774 , 1775 and 1776 . In 1764 he help build the Province road to the Gilmanton town line . Town assessor in 1763 . 1790 town census 1 boy and 1 girl . He was born in 1718 and died in 1797 . His wife MARY YOUNG was born in 1725 and died in 1806 . They are buried on the farm by the pond .

## Children of John

1. JOSEPH , b. 1755 , d. 1834
2. NATHANIEL , b. 1763 , d. 1817
3. LOIS , m. JOHN DREW and JONATHAN McDUFFEE
4. MARY , b. 1759 , d. 1830
5. ABIGAIL , b. 1754 , d. 1830 m. SAMUEL NELSON 1st  
m. SAMUEL BRAGG 2nd She owned lot 9 1st division ,  
lot 120 2nd division in 1819 .
6. PAUL , b. 1758 , d. 1811 He lived at MARIE  
FRENCH place in 1783 , lots 21 , 22 , 23 and 24  
1st division . Served in Rev. war at Bennington .  
His wife MEHITABLE WINKLEY died in 1824 . They are  
buried in the cemetery on the FRED EVANS farm .

## TASKER

2. JOSEPH TASKER son of JOHN TASKER lived on lots 27 and 28 1st division in 1778 . He built the MERRILL place on Bow lake road . He also had lots 13 , 14 and 15 1st division . Town selectman in 1804 , 1805 and 1808 . Served in the Rev. war in 1777 at Saratoga N.Y. He built a church on his land in 1803 , later moved to WINKLEY corner in 1819 . 1790 town census 3 boys and 3 girls . He was born in 1756 and died in 1833 . His wife SALLY DREW was born in 1756 and died in 1834 . They are buried at the WINKLEY corner cemetery .

## Children of Joseph

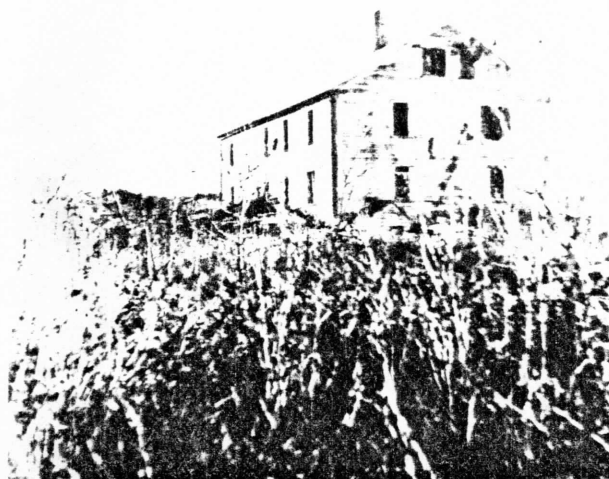
1. POLLY ,
2. LOUISE , b. 1785 , d. 1880 m. ISAAC WILLEY Jr
3. BETSEY , b. 1780 , d. 1783
4. ABIGAIL , b. 1783 , d. 1852 m. SAMUEL NELSON Jr
5. JOHN , b. 1789 Lived Montville, Maine .
6. PAUL , died in 1798
7. MEHITABLE ,
8. WILLIAM , had 1 half of his father farm in 1829 .
9. IRA , b. 1799 , d. 1836 His wife LYDIA EDGERLY ,  
b. 1804 , d. 1854 . He had his father farm in 1829 .

## Children of Ira

- a. LYDIA A , died in 1833
  - b. JONATHAN , b. 1831 , d. 1897 His wife  
BETSEY BICKFORD , b. 1832 , d. 1914 . Had  
father farm . Served Civil war .
  - c. SARAH , b. 1829
10. JOSEPH Jr , b. 1792 , d. 1886 His wife SALLY , b.  
1799 , d. 1886 . Had IDA CLARK place in 1830 . Buried  
Pittsfield Cem . Dau. EMELINE m. JOSEPH HARVEY .



PAUL TASKER grave  
FRED EVANS place



JOHN TASKER farm , now gone



JOSEPH TASKER farm , now HELEN MERRILL place



HAROLD , ARTHUR and EVERETT TASKER with  
their oxen around 1910



PAUL TASKER farm , burnt down in 1911

## TASKER

3. NATHANIEL TASKER son of JOHN TASKER lived on his father farm. He was town selectman in 1807 , 1809 , 1814 and 1815 . He was surpose to built the town pound in 1817 , but got sick . He had a share in the TASKER Saw mill in the Center . He was born in 1763 and died in 1817 . His wife SALLY HILL was born in 1781 and died in 1837 . Buried on the farm .

## Children of Nathaniel

1. SETH , b. 1809 , d. 1874
2. MARY , b. 1799 , d. 1890 m. JOSEPH WALKER
3. LOUISE ,
4. VIENNA , b. 1808 , d. 1895 m. HORACE WALKER
5. NATHANIEL Jr , had part of his father farm in 1833.
6. PAUL , b. 1812 , d. 1882
7. GILBERT , b. 1805 , d. 1876 His wife ELIZA DURGIN  
b. 1809 , d. 1895 . He had his father farm in 1833 .  
He is buried in the family cemetery .

## Children of Gilbert

- a. GILBERT Jr , b. 1849 , d. 1852
- b. ELVIRA , b. 1844
- c. ELIZA , b.
- d. MARY S , b. 1835
- e. JOHN , b. 1838 , d. 1934 His wife  
SARAH JOHNSON , b. 1839 , d. 1921 . He  
had his father farm in 1879 .

## Children of John

1. CHARLIE , b. 1866 , d. 1937
2. ANNIE , b. 1870 , d. 1950  
She was a teacher . She taught  
in the TASKER school .

## TASKER

4 . PAUL TASKER son of NATHANIEL TASKER lived in Strafford N.H. Where FRANCIS TASKER lives now . He was born in 1812 and died in 1882 . His wife MAY HILL was born in 1813 and died in 1885. The old place burnt down around 1910 . They are buried in the South Barnstead cemetery .

## Children of Paul

1. HORACE , b. 1856 , d. 1926 Lived on home farm .
2. NATHANIEL ,
3. RANSON ,
4. WILLIAM ,
5. DANIEL ,
6. SOPHRONIA ,
7. EMILY J , b. 1840 , d. 1855
8. JOHN F ,
9. MARY E ,
10. CHARLES , b. 1842 , d. 1844
11. CHARLES , b. 1854 , d. 1855
12. HERBERT , b. 1859 , d. 1927 His wife MARY FOSS ,  
b. 1863 , d. 1942 . Lived on father farm .

## Children of Herbert

- a. HAROLD , b. 1895 , d. 1976 m. MAY  
WHEELER . Lived in Strafford N.H.
- b. EVERETT , b. 1900 m. MARY STONE
- c. GEORGE , b. 1886 , d. 1959
- d. ALICE , b. 1892
- e. LESLIE , b. 1891 , d. 1978
- f. ARTHUR , b. 1888 , d. 1966 Lived on the  
home farm .

## TASKER

5. SETH TASKER son of NATHANIEL TASKER lived in the Center by TOTHILL store in 1856 . He was born in 1809 and died in 1874 . His wife ROXANNE was born in 1813 and died in 1894 . They are buried in the Riverview cemetery .

## Children of Seth

1. JULIA A , b. 1835 , d. 1854
2. FRANK , b. 1854 , d. 1925
3. SARAH , b. 1837 , d. 1882
4. MARY A , b. 1851 , d. 1922 A dressmaker in Boston.
5. EMILY , b. 1844 , d. 1875
6. CHARLES , b. 1841 , d. 1842
7. ALBERT , b. 1847 , d. 1849
8. ALBERT , b. 1858 , d. 1922 His wife GEORGIA SCRUTON , b. 1853 , d. 1915 . Lived in the Center in 1892 .

## Children of Albert

- a. LILLIAN , b. 1873 , d. 1967
- b. ARTHUR , b. 1884 , d. 1954 m. ALICE SEWARD , b. 1883

## Children of Arthur

1. MALCOLM , b. 1904 , d. 1924 .
2. HARRY , b. 1903 , d. 1977
3. BERNARD , b. 1901
4. LILLIAN , b. 1906

## TEBBETTS

1. DANIEL TEBBETTS of Madbury N.H. settled on lot 62 2nd Div . in 1783 , the KERN place on GARLAND road . He is buried in a cemetery behind the barn .

## Children of Daniel

1. JOHN , b. 1765 , d. 1854 His wife DOROTHY , b. 1764 d. 1832 . Had his father farm . Buried in family Cem .

## Children of John

a. JOHN Jr , b. 1804 , d. 1883 His wife ANNA FELTON  
b. 1803 , d. 1884 . Had his father farm .

## Children of John Jr

1. WILLIAM , b. 1832  
2. MARY , b. 1834  
3. HANNAH , b. 1837  
4. DANIEL , b. 1830 His wife LUCY , b. 1831  
5. HIRAM , b. 1839 His wife JENNIE HANSON ,

## Children of Hiram

a. JOHN , b. 1875 , d. 1952 He lived at WINKLEY corner .  
b. LYDIA , b. 1795 , d. 1879 m. Dea SAMUEL PERKINS  
c. ISREAL , b. 1807 , d. 1886 His wife OLIVE , b. 1805 , d. 1890 He lived next to his father .

## Children of Isreal

1. LAURINDA , b. 1835 , d. 1842  
2. ORREN , b. 1847 , d. 1900  
3. CLARINDA , b. 1834 , d. 1842  
4. ELIZA , b. 1837 , d. 1907



## TEBBETTS

2. EPHRAIM TEBBETTS of Gilmanton N.H. settled on lots 88 and 89 2nd division in 1771 . He built the PARKEY place . In 1799 he bought 160 acres of land from JOHN FISHER and moved over to where GORDON PRESCOTT lives now . 1790 town census 3 boys and 2 girls . He served in the Rev. war at Winter Hill , Rhode Island and Fort Ticonderoga . He was born in 1754 and died in 1840 . He was a brother of ROBERT TEBBETTS . Town selectman in 1784 and 1790 . He sold his farm to TIM BARKER in 1825 . I think he is buried across from PRESCOTT house , the old stones are gone now .

## Children of Ephraim

1. ABIGAIL , had part of her father farm . She married TIMOTHY BARKER in 1813 .
2. ISAIAH , b. 1784 , d. 1840 Had part of his father farm . Married EUNICE WELLS in 1803 .

## Children of Isaiah

- a. OLIVE , b. 1805 m. ISREAL TEBBETTS
- b. MARY , b. 1810 m. SIMEON LOUGEE Jr
- c. ELIZA , b. 1816 , d. 1882
- d. PAUL , b. 1807 , d. 1883

3. HENRY TEBBETTS of Canterbury N.H. lived on GUY CLARK farm in 1800 . He owned lots 73 and 74 2nd division in 1801 . He married SARAH SINKLAIR BUNKER in 1777 .
4. ELIPHALET TEBBETTS signed a petition to lay out a road to BUNKER mill from the Province road in 1784 .
5. JOSIAH TEBBETTS , born in 1784 and died in 1840 .

## TEBBETTS

6. ROBERT TEBBETTS lived on lot 24 2nd division in 1778, by DENNETT brook and the GIL. town line . He later lived in Pittsfield . He served in the Rev. war at Winter Hill , Rhode Island and Fort Ticonderoga . A brother of EPHRAIM TEBBETTS . He was born in 1759 and died in 1842 . His wife TRYPHENA CHAPMAN was born in 1757 and died in 1845 . Buried some where on the farm .

## Children of Robert

1. ROBERT J , b. 1795 His wife SUSAN , b. 1805

## Children of Robert J

- a. LAURA , b. 1832 , d. 1851
- b. FRANKLIN , b. 1826
- c. MARY C , b. 1835
- d. CYNTHIA , b. 1823
- e. JONATHAN , b. 1834

## THURSTON

1. JOHN THURSTON of Gilmanton N.H. lived at ROY WITHAM place on Bow lake road in 1856 . He was born in 1793 and died in 1859 . His wife HANNAH NUTTER was born in 1793 and died in 1868 . He owned lot 49 1st division in 1817 . Buried South Barnstead Cem .

## Children of John

- 1. MARTHA , b. 1819 , d. 1901 m. WILLIAM BODGE
- 2. DANIEL , b. 1826 , d. 1852
- 3. ELIZA , b. 1835 , d. 1877
- 4. MARY , b. 1820 , d. 1887 m. JAMES STEVENS

## Children of James

- a. NETTIE , b. 1856 , d. 1934

## THOMPSON

1. STEPHEN J THOMPSON owned the JONATHAN CHESLEY farm below TIMS hill in 1839 . Lot 77 and 76 2nd division . He died in 1851 . His wife NANCY CHESLEY died in 1840 . He was buried in Durham N.H.

2. EDWARD THOMPSON lived in RALPH BROWN place in 1849 . He was born in 1816 . His wife MARY was born in 1822 .

## Children of Edward

1. EDWARD , b. 1849
2. WILLIAM , b. 1851
3. SOPHIA , b. 1853
4. MARY , b. 1855
5. HANNAH , b. 1857

## WALLACE

1. Capt WILLIAM WALLACE lived in the Parade at the EMERSON place in 1840 . He later lived on the Province road down by Crooked run in 1856 . He was surveyor of high ways in 1838 . His wife MARGARET was born in 1803 and died in 1848 .

2. JANE WALLACE of Concord N.H. lived in the EMERSON place in 1849 , 20 acres .

3. JAMES WALLACE of Mass . died in a railroad accident in 1848 . He was born in 1809 .

4. JOSEPH WALLACE of Concord N.H.

5. MARY ANN WALLACE ,

## TRICKEY

1. JOHN TRICKEY of Newington N.H. built the first church in Barnstead in 1730 . In back of HAZEL CLARK place . He got paid 90 pounds for building it . He surveyed the first division lots in 1731 . He Owned lot 48 1st division in 1730 .
2. THOMAS TRICKEY owned lot 75 1st division in 1730 .
3. LEMUEL TRICKEY owned lot 75 1st division in 1760 . His wife was ALICE NUTTER .
4. JONATHAN TRICKEY owned lot 75 1st division in 1763 .
5. BENJAMIN TRICKEY had lot 93 1st division in 1812 . East of the HANSCOMB place . He was born in 1786 and died in 1869 . His 1st wife LAVINIA HOLMES died in 1832 . His 2nd wife NANCY PERKINS was born in 1807 and died in 1856 . They are buried in a Cem. on the farm , the stones have been taken .

## Children of Benjamin

1. BETSEY , b. 1835 m. CLARK BERRY in 1855 .
2. TERRELL , died in 1846 .
3. WILLIAM , died in N.Y. in 1849 .
4. LAVINIA F , b. 1851 , d. 1855
5. THOMAS T , b. 1837 , d. 1867 He had his father farm in 1857 . Served in the Civil war . Buried in the PITMAN cemetery .
6. B FRANK , b. 1838 , d. 1876
7. JOSEPH ,

## TUTTLE

1. JOHN TUTTLE of Dover N.H. settled on lots 84 and 95 2nd division in 1776 . The GUY HARVELL place . TUTTLEBORO got its name from him . He was born in 1752 and died in 1827 . His wife DOROTHY JACOB was born in 1752 and died in 1825 . He is buried in the TUTTLE cemetery , old field stones .

## Children of John

1. Col JOHN , b. 1784 , d. 1854
2. JOSEPH , b. 1774 , d. 1851
3. HANNAH , b. 1791 , d. 1855 m. DAVID JACOB
4. WILLIAM , died in Newmarket N.H. in 1826 . Buried in the TUTTLE Cem . His wife died in 1822 .
5. SILAS , b. 1784 , d. 1862 His 1st wife DOROTHY died in 1831 . His 2nd wife was ELIZABETH JACOB . He lived in the POIRIER place in 1811 .

## Children of Silas

- a. NATHANIEL , died in 1822
6. ISAAC , he lived on the corner before you get to the LOUGEE place . The RUFUS EWERS place . He was born in 1781 . His 1st wife SOPHIE HOITT , b. 1799 , d. 1824 His 2nd wife was OLIVE HUNTRESS in 1825 .

## Children of Isaac

- a. HANNAH , b. 1818
- b. FRANCIS , b. 1826
- c. SOPHIE , b. 1826
- d. ROOXEHE , b. 1820
- e. MARY , b. 1822
- f. OLIVE , b. 1828
- g. ISAAC Jr , b. 1809 , d. 1885

## TUTTLE

2. ISAAC TUTTLE Jr son of ISAAC TUTTLE lived on RALPH BROWN place in 1849 . He was tything men and constable for the town in 1839 . He was born in 1809 and died in 1885 . His wife SOPHIE JACOB was born in 1812 and died in 1888 . Buried by where REB LANK use to live . He lived at the farm there in 1861 .

## Children of Isaac Jr

1. FRANKLIN , lived at REB LANK place in 1861 .
2. ROOXBE , b. 1837
3. LAURA , b. 1847
4. CHARLES L , b. 1849
5. ENOS , b. 1825 , d. 1914 His wife LYNTHIA KENISON b. 1841 , d. 1913 . Lived at KEEFE place . Buried by REB LANK place .

## Children of Enos

- a. MARQUIS , b. 1863 , d. 1867
6. EMELINE , b. 1853 , d. 1865

3. GEORGE TUTTLE son of Col JOHN TUTTLE lived in Pittsfield N.H. He was born in 1810 and died in 1878 . He married JUDITH DAVIS in 1834 . He served in the Civil war .

## Children of George

1. HENRY , m. ANGELINE SCRIGGINS in 1860 .
2. HIRAM , m. MARY FRENCH in 1859 . He lived in Pittsfield N.H. He was Governor of N.H. in 1891 . He bought land for the Suncook Railroad in 1880s .

## TUTTLE

4. JOSEPH TUTTLE son of JOHN TUTTLE lived on Beauty hill road , below his father place . Across from the TUTTLE cemetery . He owned lot 84 2nd division in 1820 . He was born in 1774 and died in 1851 . His wife PHEBE was born in 1781 and died in 1848. Buried in the TUTTLE cemetery .

## Children of Joseph

1. CURTIS , b. 1815 , d. 1872
2. CHARLES , b. 1821 , d. 1871 His wife JULIA ANN ,  
b. 1826 , d. 1849
3. SPOFFORD , b. 1822 His wife ABIGAIL , b. 1828

## Children of Spofford

- a. WILLIAM , b. 1853
- b. EMERY , b. 1860
- c. HARRIETT , b. 1862
4. SOPHIE , b. 1825 , d. 1832
5. ELIZA ,
6. JOHN J , b. 1805 , d. 1883 His wife BETSEY JACOB ,  
b. 1803 , d. 1872 . He had his father farm . He was  
a blacksmith . Buried TUTTLE cemetery .

## Children of John J

- a. SARAH , b. 1844 , d. 1907 m. CHARLES DAVIS
- b. EMILY , b. 1829 , d. 1899 m. OLIVER

## P H YOUNG

- c. SOPHIE G , b. 1839 , d. 1904 m. HORACE  
MUNSEY

d. DANIEL , b. 1833 , d. 1899 His wife  
ASHSAH WILLEY , b. 1841 , d. 1913 . He  
had JOSEPH TUTTLE farm .

7. WILLIAM , b. 1839 A blacksmith . Ran shoe shop .

## TUTTLE

5. Col JOHN TUTTLE son of JOHN TUTTLE had his father farm until 1837 . Then he moved in to the GOSSE place in the Center . He had the shoe shop , the dam and the tannery by the GOSSE place in 1838 . He was in the War of 1812 , at Portsmouth N.H. He was born in 1784 and died in 1854 . His 1st wife SALLY JACOB , was born in 1786 and died in 1825 . His 2nd wife MARTHA TWOMBLY died in 1832 . His 3rd wife HANNAH STACKPOLE was born in 1791 and died in 1855 . Buried in the Center cemetery . He sold the tannery to NOAH HUNTRESS in 1840 .

## Children of Col John

1. GEORGE , b. 1810 , d. 1878
2. ABIGAIL , b. 1815
3. LEVI , b. 1817 His wife was NANCY E TUTTLE . He lived at the GOSSE place until 1853 .
4. DOROTHY , b. 1812 , d. m. DANIEL M JACOB
5. MARTHA , b. 1831
6. SALLY , b. 1824 , d. 1832
7. MARGARET , b. 1819 , d. 1832

6. MARGARET TUTTLE sister of JOHN TUTTLE was born in 1762 and died in 1819 . She married DANIEL JACOB .



## TUTTLE

7. THOMAS TUTTLE of Barrington N.H. He lived on lot 9 JOHN CATE plan in 1806 . On the Peachum road beyond VARNEY brook on the left . He had a Saw mill on the VARNEY brook below the road in 1806 . They also ran a Shingle mill . He was born in 1779 and died in 1876 . His wife SALLY McNEAL was born in 1777 and died in 1847 in Strafford N.H. He is buried in a cemetery by the Peachum road , on the left by the golf course .

## Children of Thomas

1. HANSON , b. 1803 , d. 1883

2. ABIGAIL , b. 1805

3. SARAH , b. 1810 , d. 1887

4. MARY , b. 1812 , d. 1892

5. SAMUEL , b. 1817

6. DANIEL , b. 1817 , d. 1887 He had part of the Saw mill and Shingle mill with his father . Buried in the family cemetery .

7. THOMAS Jr , b. 1810 , d. 1887 He lived in a place by the VARNEY brook . He help run the mills . He was a millwright . His wife was LOIS TUTTLE . Buried in the family cemetery .

## TUTTLE

8. HANSON TUTTLE son of THOMAS TUTTLE lived in North Barnstead below GEORGE PITMAN in the JACOB SAUNDER farm in 1847 . He had lots 8 and 9 JOHN CATE plan in 1848 . He was surveyor of lumber in 1838 . He was born in 1803 and died in 1883 . His wife SALLY G MILLS was born in 1803 and died in 1884 . They are buried in the PITMAN cemetery .

## Children of Hanson

1. ABIGAIL , b. 1831 , d. 1835
2. SAMUEL , b. 1832 , d. 1874
3. JOHN , b. 1833
4. JAMES , b. 1837 , d. 1903 His wife ALICE HILL ,  
b. 1841 , d. 1934

## Children of James

- a. ANNIE , b. 1870 , d. 1935
5. FIDELIA , b. 1845
6. SARAH J , b. 1843 , d. 1892
7. GEORGE , b. 1840 , d. 1917 His wife ISABEL DAVIS ,  
b. 1855 , d. 1929 . They lived on the Peachum road ,  
east of the LOCKE farm in 1892 . The farm is gone  
now .

## Children of George

- a. CHARLES , b. 1877 , d. 1950 His wife  
ANNA NORIN , b. 1877 , d. 1955 They lived  
in the Parade .

## Children of Charles

1. GEORGE S , m. LILLIAN BUZZELL
2. ELSIE , m. RUFUS BLY
3. CLARA ,
4. BERTHA , b. 1912 , d. 1930

## TWOMBLY

1. JOHN B TWOMBLY had lot 78 2nd division in 1814 . It was the parsonage lot in the Center . He owned the land north of the church and east up the Branch river . He sold his farm and Saw mill to JEREMIAH BODGE in 1815 . His wife was LYDIA TWOMBLY . He sold some of his land to NATHANIEL MESERVEY in 1815 .

## Children of John

1. PAUL , his wife was NANCY DAVIS . Buried in the Center cemetery .

## Children of Paul

a. CHARLES , b. 1857 , d. 1938 His wife was LIZZIE RIGGS .

## Children of Charles

1. ARTHUR , b. 1893 , d. 1894  
 2. MARTHA , m. Col JOHN TUTTLE in 1826 . She died in 1832 .

3. LEMEUL , had part of lot 118 2nd division in 1802. His wife was HANNAH TWOMBLY .

## Children of Lemuel

a. LEMUEL , b. 1796 His wife ABIGAIL ,  
 b. 1792 .

## Children of Lemuel Jr

1. SARAH , b. 1827  
 2. DANIEL , b. 1833  
 3. JOSEPH , b. 1838  
 4. SAMUEL , b. 1849

4. AARON , died in 1857 . His wife died in 1857 .

## WALKER

1. WILLIAM WALKER son of SETH WALKER of Portsmouth N.H. He lived on a farm over looking LOCKE lake in 1805 . The farm is gone now. A Rev. war soldier at Fort Sullivan in 1775 . He was b. 1759 and d. 1832 . His wife ELIZABETH SHACKFORD b. 1761 , d. 1843 . They are buried on the farm on the north east end of Locke lake .

## Children of William

1. MARK , b. 1805 , d. 1826
2. LUCY , b. 1799 m. SOLOMAN YOUNG
3. NANCY , b. 1793 , d. 1833 m. JOSEPH JENKINS
4. WILLIAM Jr , b. 1786 , d. 1844 His wife BETSEY DOW , b. 1787 , d. 1851 He had his father farm . Town selectman for 10 years . Buried on the farm .

## Children of William Jr

- a. Capt SETH , b. 1815 , d. 1843 His wife HANNAH YORK , b. 1811 , d. 1895 . A militia man.
- b. ANN , b. 1824 , d. 1849 m. DANIEL F DAVIS
- c. ABBIE , b. 1826 , d. 1906 m. JOHN K DAVIS
- d. JOHN , b. 1812 , d. 1892 His wife BETSEY BUNKER , b. 1812 , d. 1892 Had his father farm.

## Children of John

1. MARY , b. 1834 , d. 1893
2. NANCY , b. 1837 m. DAVID MORRISON
3. SARAH , b. 1841 , d. 1902
4. CHARLES E , b. 1839 , d. 1918 . His wife JANE TITCOMB . He had the farm .

## Children of Charles

- a. LIZZIE ,

## WALKER

2. SAMUEL WALKER lived in North Barnstead across from the school . Across from CORAN DAVIS place . He got the farm in 1831 . Capt in the militia . He was born in 1800 and died in 1843 . His wife RUTH JENKINS was born in 1803 and died in 1852 . Buried in the WILLIAM WALKER cemetery .

## Children of Samuel

1. MARK , b. 1826 , d. 1879 . He had father place . He was a doctor and lived LOCKE corner . His wife ADDIE , b. 1840 , d. 1893 .

## Children of Mark

- a. ALBION , b. 1864
- b. ANGIE , b. 1867
- 2. CLARA ,
- 3. MARY J , b. 1830 , d. 1851
- 4. WILLIAM , b. 1835 , d. 1843
- 5. GEORGE C ,
- 6. BETSEY , b. 1828 , d. 1895
- 7. SAMUEL Jr , b. 1832 Had his father farm in 1855 .

3. GIDEON WALKER brother of WILLIAM WALKER had lot 9 JOHN CATE plan and a Saw mill in 1825 . He got it from JOHN S WALKER of Portsmouth . He was born in 1763 and died in . His wife was LYDIA WATSON .

4. MARK WALKER of Dover N.H. owned the mill priviledge and land by KELLEY brook and the Pittsfield line in 1790 .

## WALKER

5. JOSEPH A WALKER lived at GEORGE PITMAN place in 1835 . He was a buyer and seller of land . He owned part of the Saw mill on the outlet of Suncook pond in 1851 . He owned farm of Dr WILLIAM WALKER in 1853 . He was born in 1801 and died in 1864 . His 1st wife ABIGAIL was born in 1798 and died in 1856 . His 2nd wife RUHAMAH was born in 1805 . Buried in the DOW cemetery .

## Children of Joseph A

1. Dr WILLIAM , b. 1828 , d. 1855 His wife AUGUSTA WEBSTER , They lived at LOCKE corner .
2. JOSEPH , b. 1830
3. ALBERT J , b. 1824 , d. 1843
4. GEORGE , had PITMAN farm .
5. VICTORIA , b. 1850
6. CHARLOTTE , b. 1846
7. JAMES , b. 1847

6. JOSEPH WALKER had the LUNVILLE place in South Barnstead in 1836 . The DANIEL farm , now gone . He was born in 1800 and died in 1876 . His wife MARY TASKER was born in 1799 and died in 1890 . They are buried in the South Barnstead cemetery .

## Children of Joseph

1. HORACE , b. 1836 , d. 1902 His wife VIENNA TASKER , b. 1808 , d. 1895 His 2nd wife MARY ELKINS , b. 1836 . He had the home farm .

7. LYDIA WALKER born in Portsmouth in 1738 and died in 1796 . Buried at the JONES place . Her father was EDWARD WALKER and her mother was SARAH NUTTER .

## WEBSTER

1. SAMUEL WEBSTER lived in North Barnstead where PHIL HODGMAN lives . He got the land in 1820 . He ran a store also . He owned part of the Saw mill and Grist mill on Pineo stream in 1845 . He ran the post office . He was a justice of the peace . He was born in 1793 and died in 1855 . His wife LOIS was born in 1798 and died in 1889 . They are buried in the DOW cemetery .

## Children of Samuel

1. HORACE , had part of his father farm in 1857 .
2. LOIS , b. 1825 , d. 1844
3. SARAH F , b. 1825 , d. 1845
4. AUGUSTA , b. 1829 , d. 1897 m. Dr WILLIAM WALKER
5. ROBERT S , b. 1820 , d. 1899 His 1st wife BETSEY PARSHLEY , b. 1821 , d. 1857 . His 2nd wife SOPHIA PARSHLEY . He had his father farm and store . He had the DANIS place by the church . He owned the Starch mill by valley dam in 1857 . He owned place and mills on the PINEO stream in 1856 . Buried with his father .

## Children of Robert S

- a. FANNIE , b. 1846
- b. LAURA , b. 1850
- c. MARY , b. 1854
- d. SOLON , b. 1851 , d. 1857
- e. EDWIN , b. 1864 , d. 1947
- f. SAMUEL , b. 1860 , d. 1911 He had the home place .

2. ISAAC S WEBSTER brother of SAMUEL WEBSTER . He was born in 1793 and died in 1855 .

## WEBSTER

3. CALEB WEBSTER son of NATHANIEL WEBSTER of Kingston N.H.

He lived on the original RAND place on Beauty hill in 1838 .

Across from ANDREW place . He had part of lot 12 of the JOHN

CATE plan in 1824 . He was born in 1811 and died in 1874 .

His 1st wife ELIZA was born in 1806 and died in 1855 . His

2nd wife CAROLINE PICKERING was born in 1825 and died in 1871 .

They are buried in the LOUGEE cemetery .

Children of Caleb

1. EMMA ,

2. CLARA ,

3. HORACE ,

4. JOSEPH WEBSTER son of REUBEN WEBSTER . He lived in Barnstead

for a while and then moved to Snackerty . He lived in LAURA

HOREN place . He ran a store and was a preacher . He was born

in 1826 and died in 1901 . His wife SARAH A OTIS was born in

1828 and died in 1910 . They are related to JOHN MOORE .

Children of Joseph

1. EMMA , b. 1864 , d. 1920

2. LYDIA , b. 1849

3. MAY , b. 1870 , d. 1919

## WEEKS

1. JOHN WEEKS owned lot 85 2nd division in 1777 . He signed a petition to make JOHN SINKLER a justice of the peace in 1777 .

2. BENJAMIN WEEKS owned lot 112 2nd division in 1787 .

3. HENRY WEEKS served in the War of 1812 .

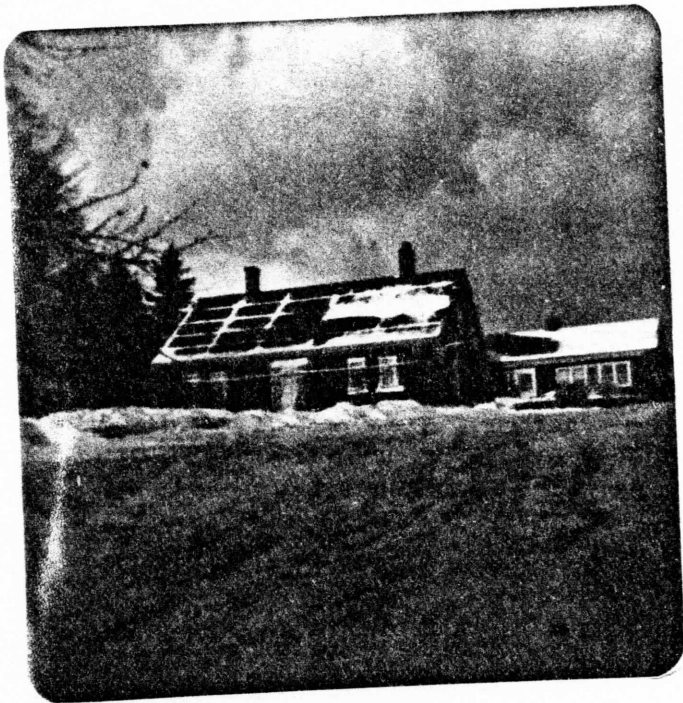




JONATHAN YOUNG grave  
old Beauty hill Cem



HAZEN WHEELER place  
JEFFREY YOUNG now



TITUS SALTER place  
Mrs JOHNSON now



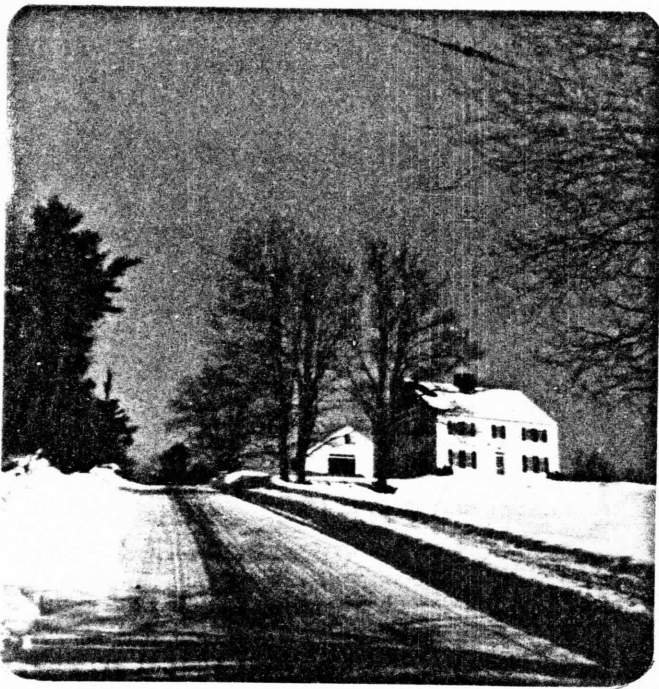
OLIVER P H YOUNG place  
ARTHUR GOSSE now



JACOB WILLEY place  
CRAWFORD now



THOMAS WILLIAMS place



JOSEPH A WALKER farm  
GEORGE PITMAN now



JOHN WELCH cemetery

## WELCH

1. JOHN WELCH of Durham N.H. lived on lot 42 1st division in 1794 . Down by WELCH 4 corners . He was in the Rev. war at Portsmouth harbor and BUNKER HILL . He was born in 1758 and died in 1815 . His wife MARY SMALL was born in 1755 and died in 1842 . They are buried by WELCH 4 corners .

## Children of John

1. LUCINDA , died in 1823
2. EDWARD , lived in the farm by the little river in 1824 . He died in 1825 .
3. ANDREW , he lived in the farm by the little river in 1824 . He died in 1855 . His wife was BETSEY DAVIS . Buried on the sand hill .
4. SAMUEL , b. 1803 , d. 1890 He lived in Strafford . Scalped by indians and lived .
5. MOSES , lived on the farm in 1823 . His wife was MARION MITCHELL . He moved to Middletown N.H.

## Children of Moses

- a. SAMUEL , b. 1827
6. JONATHAN , he had farm on the little river .

2. THOMAS WELCH lived in Thornton N.H. He served in the Rev. war for 8 years under GEN. GEORGE WASHINGTON . He was born in 1753 and died in 1837 . His wife LOVEY ELLIOTT was born in 1764 and died in 1850 . He was a farmer .

3. EBENEZER WELCH of Durham N.H. owned Saw mill and land by MOUNTAIN and the big river in 1829 . His wife was SARAH . He was a mariner .

## WELCH

4. JONATHAN WELCH son of JOHN WELCH lived by the little river on lot 42 1st division in 1821 . His wife was NANCY DURGIN was born in 1808 and died in 1896 . Buried in the cemetery below PRESTON place in Strafford . I cant find where he is buried .

## Children of Jonathan

1. EMILY J , b. 1834 , d. 1851
2. JONATHAN C , b. 1828
3. ELLEN F , b. 1847 , d. 1938 m. NOAH HOLMES
4. EDWIN , b. 1842 , d. 1890 Lived in Rochester .
5. JOHN W , b. 1832 , d. 1917 . His wife JOSEPHINE CLARK , b. 1839 , d. 1917 . Lived at STOCKMAN place .

## Children of John W

- a. Dr FRED , b. 1867 His wife ANNIE LYMAN .

## Children of Dr FRED

1. MAUD , died in 1918
2. EUCLID , died in 1918
- b. LILLIAN , b. 1865 , d. 1933
- c. ALONZO , b. 1869 , d. 1934
- d. FRANK , b. 1884 , d. 1969 His wife SADIE MORRISON , b. 1886 , d. 1940 .

He lived on the WELCH farm .

## Children of Frank

1. FRANCIS , b. 1907
2. DOROTHY , b. 1911 , d. 1967
3. EARLIN , b. 1914
4. CHARLIE , b. 1913
5. FRED , b. 1909 m. RENA WELLS

Lived on the farm .

## WEST

1. SAMUEL WEST ran blacksmith shops around town in differant places . On the PINEO stream , on HERNDON corner . He lived at the REYNOLD place in South Barnstead in 1855 . He was born in 1811 . His wife SALLY was born in 1808 and died in 1868 . His 2nd wife was ISABELLA COLBY . Buried in the WALKER Cem .

## Children of Samuel

1. MARTHA , b. 1833
  2. SAMUEL A , b. 1826
  3. THOMAS , drown in Brindle pond in 1841 .
  4. BETSEY , died in 1844
  5. MARTIN , b. 1839
2. EDWARD WEST had a blacksmith shop on PINEO stream in 1829 .
3. JACOB WEST served in the War of 1812 .

## WENTWORTH

1. WILLIAM B WENTWORTH lived in a place on the east end of LOCKE lake and on the Alton town line in 1830 . He was born in 1801 and died in 1851 . His wife ANNA was born in 1795 and died in 1867 .
2. HENRY WENTWORTH of Alton had a place on the east end of LOCKE lake in 1856 . He was b. 1825 . His wife ELIZA , b. 1827

## Children of Henry

- |                      |                      |
|----------------------|----------------------|
| 1. CHARLES , b. 1849 | 3. FRANK , b. 1859   |
| 2. GEORGE , b. 1853  | 4. WILLIAM , b. 1841 |

## WHEELER

1. HAZEN WHEELER son of ADNER WHEELER of Salem N.H. He lived at LEONARD SMITH place in the Parade in 1853 . He ran the store and post office in the Parade . He was born in 1798 and died in 1874 . His wife JANE JEWETT was born in 1798 and died in 1892 . They are buried in the old Parade cemetery .

## Children of Hazen

1. LYDIA , b. 1830 , d. 1900
2. LAUREN , b. 1846 , d. 1901 Had the home place .
3. ELLEN , b. 1836
4. LUKE , b. 1838
5. MARY J , b. 1827
6. LAURA ,
7. Dr PHINEAS , b. 1840 m. SARAH COLBY
8. Dr JOHN , b. 1828 , d. 1899 His wife MARY GARLAND , b. 1838 , d. 1921 . Doctor in the Civil war . Lived HUSE place in the Center . Buried in the Center Cem .

2. JOSEPH WHEELER , wife was ARVILLA GOULD .

## Children of Joseph

1. LOREN , b. 1853 , d. 1943 . His wife ABBIE GRIFFIN , b. 1860 , d. 1930 . Came to Barnstead in 1882 and lived in the WHEELER place . Conductor on the Suncook Valley railroad .

## Children of Loren

- a. EMMA , b. 1884 , d. 1969
- b. GEORGE , b. 1880 , d. 1923
- c. MAUDE , b. 1885 , d. 1978
- d. MABEL , b. 1882 , d. 1953
- e. FRANK , b. 1883 , d. 1968
- f. WILBER , b. 1878 , d. 1944
- g. AGNES , b. 1894

## WILLEY

1. JOHN WILLEY of Barrington N.H. got farm lot 19 and 20 1st division in 1783 . He was a joiner . He had tannery and the HUNTRESS place in 1830 .

2. JACOB WILLEY brother to JOHN WILLEY got the farm lot 19 and 20 1st division in 1784 . The FRED EVANS place .

## Children of Jacob

1. JACOB Jr , b. 1770 , d. 1855 His wife SALLY ,  
b. 1769 , d. 1857 . Had the farm .

## Children of Jacob Jr

a. JACOB Jr , b. 1806 , d. 1880 His wife  
ELIZA PRIEST , b. 1815 , d. 1894 . He had  
father farm in 1834 . Buried in South  
Barnstead cemetery .

## Children of Jacob Jr

1. ORISSA , b. 1845

2. JOHN G , b. 1843 , d. 1925

His wife NANCY PRIEST , b. 1840

d. 1875 . Lived IRISCOLL place .

Buried Pittsfield Cem .

b. CALEF , b. 1797 , d. 1886 . His wife  
MARY EVANS , b. 1794 , d. 1880 . He lived  
on the ATWELL farm in 1849 .

## Children of Calef

1. MARTHA , b. 1823 , d. 1907

m. RICHARD CASWELL

2. HORATIO , b. 1830 , d. 1916

m. MARY EVANS

c. ELIZA , b. 1815 , d. 1894

## WILLEY

2. THOMAS WILLEY had lots 57 and 84 2nd division in 1790 .  
1790 town census 2 girls . His wife was SUSANNAH WILLEY .

## Children of Thomas

1. ROBERT , had his father farm in 1791 . 1790  
town census 3 boys and 1 girl .

## Children of Robert

- a. ENOCH , m. POLLY BUNKER she died in 1821  
b. JAMES , m. ELIZA RAND  
c. SUSANNAH ,  
2. SUSANNAH , b. 1764 , d. 1853 m. DAVID AVERY  
3. SILAS , got the farm in 1799 .

3. ISAAC WILLEY had the TASKER farm out of the Parade on the  
Province road in 1837 . He was born in 1778 and died in 1856 .  
His wife LOUISE TASKER was born in 1785 and died in 1880 .

## Children of Isaac

1. MARCIA , m. OLIVER WALDRON  
4. GREENLEAF WILLEY served in War of 1812 .

## WIGGINS

1. NICHOLAS WIGGINS had lots 57 and 84 2nd division in 1780 .  
1790 town census 3 boys and 2 girls . He died in 1821 . His  
wife ANN died in 1826 .

## Children of Nicholas

1. SALLY , m. ENOCH BUNKER in 1793 .  
2. JACOB , wife was CAROLINE SMART

## Children of Jacob

- a. GEORGE , b. 1844 , d. 1909



## WILLIAMS

1. SAMUEL WILLIAMS owned lot 56 2nd division next to the Parade in 1790 . 1790 town census 3 boys and 2 girls . He served in the Rev. war in 1777 . He served under Col NATHAN HALE Reg. He married SOBRIETY BUNKER in 1777 . He was born in 1757 .

2. BENJAMIN WILLIAMS lived in Newington N.H. His wife was NANCY .

## Children of Benjamin

1. THOMAS , b. 1780 , d. 1864 His wife HANNAH LANE , b. 1790 , d. 1877 . He lived by CLARENCE BICKFORD by Suncook pond in 1860 . He lived in the Center first . Buried in the cemetery by his house .

## Children of Thomas

a. CHARLES , served in the Civil war .

b. MARY ANN ,

c. SABRINA ,

d. FRANCIS , b. 1827 , d. 1894 m. JOHN  
K AYERS

e. MARTHA , b. 1822 , d. 1895 m. HIRAM  
PICKERING in 1850 .

f. EMELINE , m. GEORGE SEWARD

3. JONATHAN WILLIAMS had lot 40 2nd division in 1790 . He came from Durham N.H.

## WOODWARD

1. Dr. SIMON WOODWARD lived on lot 79 2nd division in 1824 . Where MOUNTAIN lives now . He moved to Newmarket in 1836 . He died in 1854 .

## WILSON

1. ELDER NATHANIEL WILSON of Gilmanton N.H. lived on the SINKLER place on route 107 in 1800 . He was a freewill BAPTIST and preach in his barn for over 30 years . He was a farmer . He died in 1843 . His wife FANNY PROCTOR died in 1857 . Buried by BOSIAK.

## Children of Nathaniel

1. NATHANIEL Jr , he owned lot 84 2nd division in 1800.  
He married MOLLY ROBERTS in 1816 .
2. FANNY , m. WILLIAM DEMERRIT of Durham N.H.
3. BETSEY , m. JOHN PAGE
4. ABIGAIL , m. JAMES WOODS
5. PANTHEA , m. JAMES WOODHOUSE and lived on the farm .

## Children of James

- a. BETSEY , b. 1833 m. Capt HENRY SAVAGE  
He was killed in the Civil war .

## Children of Henry

1. HENRY , b. 1859 , d. 1927
- b. FANNY , b. 1829 , d. 1913 m. JOHN  
S HOITT .
- c. GEORGE , b. 1835 m. ELIZA TEBBETT
- d. JOHN , b. 1831 m. LYDIA RAND
- e. MARY , b. 1837
- f. NATHANIEL , b. 1842
- g. SARAH , b. 1846

2. JEREMIAH WILSON of Gilmanton N.H. lived on lot 64 2nd division in 1822 . He was born in 1781 and died in 1846 . He owned lots 96 , 63 and 59 2nd division also . He died in Gilmanton .  
ABIGAIL his wife , b. 1778 , d. 1854

Twombly, Charles Pickard  
b. 7-24-1888

Brothers Eugene S.

Harry F.

? sister

Father of Charles. + mother

Frank

Florence Sanborn?

Attended Gil Seminary late 1890 + 1900.

Worked Gilmanston Cremery

Twombly, Charles

1<sup>st</sup>. wives - Charlotte?

Children - John Robert

2<sup>nd</sup>.

Rose

Children - Roberta

Dorothy

George

John Edward

## WINKLEY

1. BENJAMIN WINKLEY lived on lot 34 1st division in 1811 .  
 The WINKLEY homestead on route 126 . The home is gone now .  
 He was a blacksmith . Sealer of weights in 1839 . He owned  
 part of the PITMAN Saw mill in 1806 . The meeting house was  
 next to him in 1819 . He was born in 1772 and died in 1851 .  
 His 1st wife ELIZABETH PITMAN was born in 1775 and died in  
 1841 . His 2nd wife BETSEY CATE was born in 1778 and died in  
 1863 . Buried in the WINKLEY cemetery .

## Children of Benjamin

1. BENJAMIN Jr , had his father farm in 1824 . He  
 was a lawyer in 1847 .
2. SARAH , m. JAMES LEIGHTON
3. SAMUEL , b. 1797 , d. 1872 He had his father  
 farm in 1820 .
4. FRANCIS , b. 1805 , d. 1849 His wife OLIVE ,  
 b. 1800 , d. 1851 .

## Children of Francis

- a. OLIVE F , b. 1849 , d. 1854
- b. MARY A , died in 1844

2. HERMON WINKLEY son of PAUL WINKLEY of Strafford N.H. lived  
 on the WINKLEY farm later in the 1900 . The place burnt around  
 1940 . He married WINNEFRED CHESLEY , she was born in 1879 and  
 died in 1920 . He was born in 1875 and died in 1961 .

## VARNEY

1. IRA VARNEY lived on lot 96 2nd division in 1844 . The RILEY place on Beauty hill road . He was born in 1801 and died in 1870 . His 1st wife MERCY was born in 1804 and died in 1840 . His 2nd wife MARY was born in 1801 and died in 1870 . They are buried in the Center cemetery .

## Children of Ira

1. JONATHAN , had his father farm .
2. MARY J , b. 1832
3. JOSEPHINE , b. 1831 , d. 1833

2. JOHN C VARNEY lived in Milton N.H.

## Children of John

1. JOHN H , b. 1851 , d. 1936 His wife IDA , b. 1858 d. 1954 . He lived on the BURT place on Peachum road. A farmer and worked on the roads .

## Children of John H

- a. JOHN C , b. 1894 He had his father farm . His wife was RUTH BERRY . He was a farmer . She ran a insurance business . They later ran a store in Chichester N.H.

## Children of John C

1. JOHN B , b. 1923 His wife was HATTIE HARRINGTON , b. 1923 They live in Pittsfield N.H.

## YORK

1. SAMUEL YORK lived on the SAWYER farm above the North Barnstead church in 1795 . Lot 119 1st division . He was born in 1770 and died in 1854 . His wife BETSEY was born in 1773 and died in 1845 . I cant find where they are buried .

## Children of Samuel

1. MIRIAM , b. 1809 , d. 1879 m. CHARLES HODGDON Jr
2. HANNAH , b. 1811 , d. 1895 m. SETH WALKER
3. SAMUEL Jr , b. 1798 , d. 1863 His wife was SUSAN LOUGEE . He lived on his father farm . He was surveyor of lumber in 1839 .

## YOUNG

1. GEORGE F YOUNG born in 1831 and died in the Civil war at Andersonville prison in 1864 . Buried in the Center cemetery .
2. ANDREW YOUNG lived in the MEREDITH place in South Barnstead in 1866 . His wife was SARAH A YOUNG . He came from Strafford .
3. ACANTHUS YOUNG lived in the KNOWLES farm over on the HERNDON corner in 1856 . He came from Portsmouth N.H. He was born in 1815 and died in 1877 . His wife HARRIETT NUTTER was born in 1818 and died in 1882 . Buried in the old Parade cemetery .
4. WASHINGTON YOUNG had the farm on lot 13 1st division in 1891 . The place is in the woods below the WITHAM farm .
5. DANIEL YOUNG lived on lots 36 and 38 2nd division in 1816 . On the Province road where PAUL TASKER lives now . His wife was ABIGAIL YOUNG .

## YOUNG

1. JONATHAN YOUNG of Kingston N.H. settled on Beauty hill on lots 88 and 89 2nd division . Up by where Mrs HARVEY lives now . 1790 town census 3 boys . In 1796 he was on a commitee to erect a meeting house in the Parade . He owned MATHEW common in 1794 by Suncook pond . He served in the Rev. war . He was born in 1750 and died in 1807 . His wife SALLY died in 1816 . They are buried in the old Beauty hill cemetery .

## Children of Jonathan

1. PHINEAS , b. 1776 , d. 1850

2. JONATHAN Jr , b. 1792 , d. 1861

3. AARON , b. , d. . His wife

BETSEY died in 1843 . He had 1 third of his father farm in 1815 . He owned part of lot 92 2nd division in 1816 . He owned MATHEW common in 1815 . They are buried in the old Beauty hill cemetery .

## Children of Aaron

a. AARON G , had farm lot 86 2nd division in 1869 . He later lived in Laconia N.H. His wife was PRISCILLA YOUNG .

## Children of Aaron G

1. MARY ELLEN , b. 1839 , d. 1915

2. SOLOMAN W , b. 1835 , d. 1890

His wife LOUISA JENKINS , b. 1837 d. 1864 . Lived on AARON YOUNG farm in 1856 .

## Children of Soloman

a. ALBERT ,

b. CARRIE , b. 1861

c. SOLOMAN ,

d. LUCY ,

## YOUNG

2. PHINEAS YOUNG son of JONATHAN YOUNG lived on lot 68 2nd division in 1811 . Up above PAUL DAVIS trailer on the left . The places are gone now . He was a ship wright . He did business with SIMBON LOUGEE in 1815 . Beef 90 lbs for \$4.50 One lb of candles for \$ . 17 . He was born in 1776 and died in 1850 . His 1st wife fell from a horse and was killed in 1818 . His 2nd wife DOROTHY was born in 1782 and died in 1862 . They are buried in the LOUGEE cemetery .

## Children of Phineas

1. JOSEPH C , b. 1800 , d. 1862 His wife LYDIA LOUGEE , b. 1800 , d. 1882 . He lived on RUFUS EWERS place next to his fathers farm in 1825 . Buried with his father .

## Children of Joseph C

a. JANE G , b. 1840  
 b. FRANCIS , b. 1820 , d. 1846  
 c. LAURA , b. 1839

2. DAVID , b. 1803 , d. 1861 His 1st wife SALLY HODGDON , His 2nd wife was ELIZA HARTFORD , b. 1805 d. 1854 . They lived on lot 87 2nd division .

## Children of David

a. ALVAH , b. 1845  
 b. ANN , b. 1838 , d. 1919  
 c. HIRAM , b. 1843  
 d. FRANCIS , b. 1848  
 e. JOHN H , b. 1828 , d. 1905 His wife ELIZABETH CASWELL , b. 1833 , d. 1891 . They lived on the farm across from Mrs HARVEY place on lot 91 2nd division in 1856.

## Children of John H

1. CHARLES , b. 1861 , d. 1933



## YOUNG

3. JONATHAN YOUNG Jr son of JONATHAN YOUNG lived on his father farm in 1815 . He lived on the MATHEW common in 1816 , the BREWSTER place . He was a wheel wright . He was born in 1792 and died in 1861 . His wife SUSANNAH PITMAN was born in 1799 and died in 1883 . They are buried in the Center cemetery .

## Children of Jonathan Jr

1. SOPHIA , b. 1830 , d. 1891
2. OLIVER P H , b. 1824 , d. 1897 His wife EMILY J TUTTLE , b. 1829 , d. 1899 . They lived in the Center in the GOSSE place in 1853 . He was in the Civil war .

## Children of Oliver

- a. SARAH , b. 1852 , d. 1923 m. OSCAR FOSS
3. SAMUEL P , b. 1814 His 1st wife BETSEY MERRILL , b. 1816 , d. 1856 . His 2nd wife LYNTHIA REYNOLDS , b. 1831 . His 3rd wife MARY was b. 1820 . He was a mill wright . He lived by the narrows bridge . He ran the mills on the PIENO stream in 1835 .

## Children of Samuel P

- a. HANSON , b. 1843 , d. 1923 His wife PRISCILLA SACKETT , b. 1849 , d. 1935 . He lived in the GOLDEN place in the Center by the bridge . He was an undertaker . He served in the Civil war .

## Children of Hanson

1. BURT , b. 1878 , d. 1947  
His wife ALICE PALMER .

## Children of Burt

- a. LEILA ,
- b. CHARLES , b. 1852

4. DAVID YOUNG of Barrington N.H. lived on the GEORGE PITMAN place in 1804 . 1790 Barrington town census 1 boy and 3 girls. He was born in 1757 and died in 1844 . His wife was ABIGAIL FOSS .

Children of David

1. SOLOMAN , b. 1796 , d. 1858 His wife LUCY WALKER ,  
b. 1799 .

Children of Soloman

a. SOLOMAN Jr , b. 1835

b. LUCY A , b. 1841

2. SARAH , b. 1790

3. STEPHEN , b. 1791 , d. 1863 His wife CAROLINE MUNSEY , b. 1802 , d. 1854 . A shoemaker . He lived on WINKLEY corner . Town selectman . Buried in the Pittsfield cemetery .

Children of Stephen

a. SMITH , b. 1834 , d. 1857

4. DAVID Jr , b. 1787 , d. 1847 His wife ELEANOR NUTTER , b. 1797 , d. 1879 . They lived on the SULLIVAN farm in 1823 . Buried Center Cem .

Children of David Jr

a. DOROTHY , b. 1825 , d. 1825

b. GEORGE ,

c. MARY , b. 1849 , d. 1921

d. JOHN M , b. 1831 , d. 1920

He lived at the GOVE place .

## DIVISIONS OF BARNSTEAD

The first division was laid out in 1731 . Starting on the Barrington town line running west 2 and 1/2 miles . Then starting on the Province road running north 4 and 1/2 miles . 120 lots , 60 acres each , 120 rods by 80 rods . 12 ranges with 10 lots in each range . Having 5 rod roads next to each lot . A 15 rod road running north and south . A 20 rod road running east and west .

The second division of lots were laid out in 1763 . 120 lots with 100 acres in each lot . This started on the west side of the first division and ran west to the Gilmanton town line . With 8 ranges of lots , with 12 lots in each range . Having a 4 rod road running between each range .

The third division of lots was called the JOHN CATE plan . It was laid out in 1797 . Mr JOHN FISHER of Salem got the land from the town in exchange for several lots he owned in the 1st and 2nd division in 1770 . About 2000 acres , next to the Alton town line . He sold the land in the west part to SALTER , DUDLEY and TEBBETTS . The rest he divided into 14 lots running north and south . Where LOCKE lake is now .

The Province road was cut out in 1760 . From Bow pond to the foot line of Barnstead . It was finish to the Gilmanton line in 1764 .

# SAR RINGTON



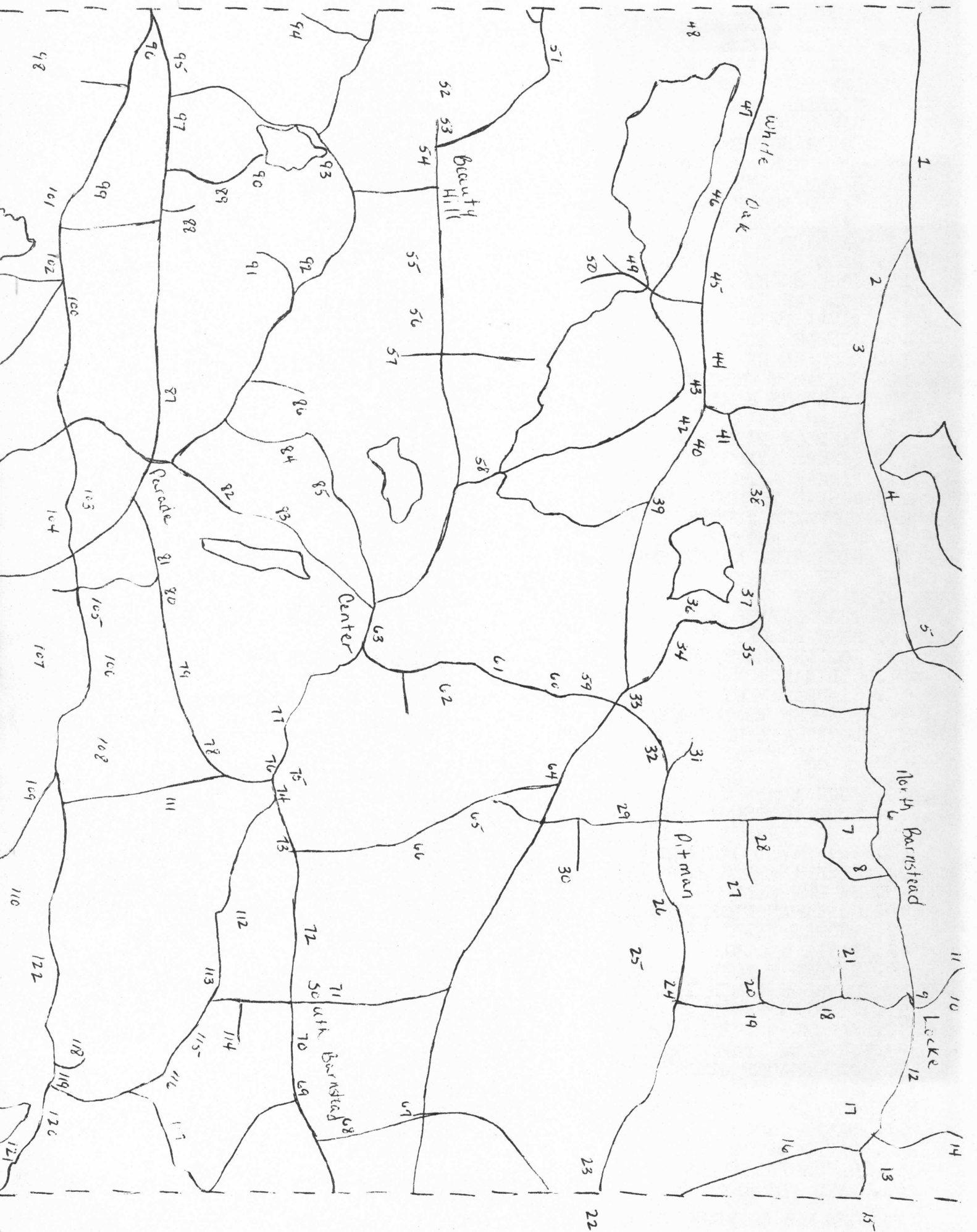
## REFERENCE SOURCES

1. Barnstead town history .
2. Barnstead town reports .
3. Records in the town library .
4. Dates copied from the town cemeteries .
5. Deeds in Dover and Laconia .
6. Books in the state library .
7. Books in the historical society .
8. Genealogy of families of N.H.
9. Genealogy of families of Strafford county .
10. Barnstead census 1790 , 1850 , 1860 and 1870 .
11. ENOS GEORGE diary and marriages .
12. Vital statistic in Concord .
13. Microfilm in the state historical society .
14. Gilmanton town history .
15. Alton town history .
16. Strafford town history .
17. Durham town history .
18. Pittsfield town history .
19. Record in the probate .

This is where I got most of my information . I also got a lot of information from the older citizens of the town . They helped me a lot about their families . Many people out of town have helped me also . There is much more that can be added to this book as time permits . I want to thank people for letting me use their snap shots . Maps drawn by LISA GENEST .  
writer

STUART MERRILL

1. DUDLEY & SALTER
2. JOSHUA AYERS
3. BERRY & PROCTOR
4. LANGLEY & DREW
5. WILLIAM WALKER
6. SIMON DOW
7. DOW & HODGDON
8. EBENEZER NUTTER
9. HIXON & AYERS
10. JAMES LOCKE Jr
11. DAVID McNEAL
12. GARLAND & ROLLINS
13. HALL
14. JOHN BERRY
15. SOLOMAN HALL
16. DAVID DREW
17. JOSEPH HALL
18. AMOS CLARK
19. BENJAMIN TRICKEY
20. Dr ENOCH HOWARD
21. ISAAC GARLAND
22. SAMPSON BABB
23. SAMUEL AVERY Jr
24. PITMAN & PENNEY
25. JOSIAH PITMAN
26. EBENEZER MUNSEY
27. JETHRO NUTTER
28. NATHANIEL NUTTER 1st
29. JOHN COLBATH
30. CANNEY
31. THOMAS PIERCE
32. SETH SHACKFORD
33. JOSIAH SHACKFORD
34. SOLOMAN MUNSEY
35. SAMUEL AVERY
36. STEPHEN PENDERGAST
37. LOCKE & AYERS
38. THOMAS TUTTLE
39. DANIEL GARLAND
40. JOHN AIKEN
41. MOSES CHESLEY
42. HENRY CHESLEY
43. Rev DAVID GARLAND
44. JOSHUA AYERS Jr
45. SAMUEL HILL
46. JONATHAN PICKERING
47. THOMAS WILLIAMS
48. DAVID GOODWIN
49. SAMUEL P YOUNG
50. EMERSON & MERRILL
51. MATHIAS NUTTER
52. SAMUEL CASWELL
53. JENKINS grave
54. OLD BEAUTY HILL
55. JACOB & TUTTLE
56. TUTTLE & SMART
57. DAVID JACOB
58. DAVID EATON
59. NATHANIEL AIKEN
60. PAUL EDGERLY
61. ELIJAH EMERSON
62. JOHN BODGE
63. CENTER
64. JOHN ELLIOTT
65. JOHN GREENLEAF
66. JONATHAN PERKINS
67. JOHN WELCH
68. WELCH graves
69. JOHN CLARK
70. South Barnstead
71. ENOCH CLARK
72. JONATHAN EMERSON
73. TASKER & WINKLEY
74. WILLIAM NUTTER
75. JOHN DAVIS
76. HOLMES grave
77. JONATHAN CHESLEY
78. JOSEPH FOYE
79. WILLIAM SCRIGGINS
80. DANIEL BUNKER
81. NATHANIEL NUTTER
82. OLD PARADE
83. RIVERVIEW
84. ELIPHALET EMERSON
85. HENRY MUNSEY
86. JACOB PICKERING
87. JOSEPH BUNKER
88. SAMUEL EATON
89. THOMAS BUNKER
90. AVERY & BUNKER
91. SAMUEL PICKERING
92. MOSES RAND grave
93. SIMEON LOUGEE
94. JONATHAN ROBERTS
95. NATHANIEL PEASE
96. EBENEZER ADAMS Jr grave
97. JOHN TEBBETTS
98. STEPHEN PICKERING
99. RICHARD SINKLAIR
100. JOSEPH NORRIS
101. Dr JOSEPH ADAMS
102. CHARLES HODGDON
103. AARON CHESLEY
104. WILLIAM LORD grave
105. HATEVIL NUTTER
106. JOHN DREW grave
107. JOSEPH JACKSON grave
108. NELSON & LANGLEY
110. AARON MERRILL
111. ELIPHALET NUTTER
112. SAMUEL PITMAN grave
113. WILLIAM HILL
114. WALKER
115. BENJAMIN EMERSON
116. EVANS HAYES
117. TASKER & WILLEY
118. EBENEZER HALL
119. SNELL & MESERVE
120. JOHN TASKER
121. EBENEZER ADAMS
122. KERBY



LIES

# Genealogists Plan Installation of Officers

Belknap Chapter of the N.H. Society of Genealogists interested meeting Mormon Church Mrs. Doris regent of Mar Chapter, gave a on the Daughte American Rev what is is as a so how to become a She described personally be member through cestor who fought Revolutionary

Meredith: The Belknap Chapter of the N.H. Society of Genealogists held an interesting meeting at the Mormon Church in Laconia. Mrs. Doris Aiken, regent of Mary Butler Chapter D.A.R., gave a talk on the functions of D.A.R. and how to become a member. Mrs. Aiken explained how she personally became a member through an ancestor who had fought in the Revolutionary War. She also told of many ways to find and prove a relationship. Stuart Merrill of Barnstead, showed a tremendous volume he had compiled on families in Barnstead. This volume had snapshots of all the cemeteries in that town and listings of the families buried there with genealogies. Mrs. Bette Whiting, president of the State Society of Genealogists, spoke of a forthcoming meeting-workshop to which all interested persons are invited. This will be held on April 9 from 9 a.m. to 4 p.m. at the Gilford Middle School. There will be several important speakers on different subjects related to genealogy. The next meeting of the Belknap Chapter will be held on Wednesday, March 8, at the Mormon Church in Laconia. New officers will be installed at that time.

Wednesday of the March 8, will be at me place-the Church on Old Main St. New of-ll be installed. For example, a on family with an come of \$4,913 or lives, while a th up to \$9,713 is intervention program, the still eligible if there are purpose of which is to six or more members in

- 19. Ezekiel Babb
- 19. William Babb

- 20. Jethro Batchelor
- 21. Joshua Babcock
- 21. Joseph Beck
- 21. Joseph Bryant
- 21. Paul Brock
- 22. Eliphalet Berry
- 23. John Berry
- 24. William Berry
- 25. Peter Berry
- 26. John Bickford
- 26. Daniel Bickford
- 27. Col. John Bickford
- 28. Arthur Bickford
- 28. Samuel Bickford
- 29. Moses Bickford
- 30. Nathaniel Blaisdell
- 31. Francis Blake
- 32. Cyrus Blanchard
- 33. John Bodge
- 34. Daniel Bodge
- 34. Thomas Brown
- 34. Benj. Brown
- 35. William Brown
- 35. Lt. James Brown
- 35. John Brown
- 36. Nathaniel Brewster
- 37. Jonathan Bunker
- 38. Eli Bunker
- 39. Joseph Bunker
- 40. Thomas Bunker
- 41. Dodavah Bunker
- 42. Daniel Bunker



- |     |                      |     |                    |
|-----|----------------------|-----|--------------------|
| 43. | John E. Bunker       | 69. | Dependence Colbath |
| 44. | Roland Bunker        | 69. | John Colbath       |
| 44. | Jonathan Bunker, Jr. | 70. | George Colbath     |
| 45. | Timothy Bunker       | 71. | Ezekiel Collins    |
| 45. | John Bunker, Jr.     | 72. | Richard Collins    |
| 46. | Abraham Bunker       | 73. | Ebenezer Coe       |
| 47. | John Bunker          | 73. | Ebenezer Coleman   |
| 48. | Lemuel Chesley       | 73. | Valentine Chapman  |
| 49. | Samuel Chesley       | 74. | Reuben Copp        |
| 50. | Moses Chesley        | 75. | Soloman Crockett   |
| 51. | Henry Chesley        | 75. | William Clark      |
| 51. | Cyrus Chesley        | 76. | Moses Canney       |
| 52. | Jefferson Chesley    | 77. | Paul J. Canney     |
| 53. | Aaron Chesley        | 77. | Rev. William Carr  |
| 54. | Benjamin Chesley     | 78. | Samuel Caswell     |
| 55. | Jonathan Chesley     | 79. | Richard Caswell    |
| 56. | Joseph Chesley       | 80. | Levi Chase         |
| 56. | Philip Chesley       | 80. | Benjamin Cole      |
| 57. | Sewell Cilley        | 81. | Winthrop Daggett   |
| 58. | Lt. John Clark       | 81. | James Dealing      |
| 58. | Levi Clark           | 82. | James C. Dame      |
| 59. | Jeremiah Clark       | 83. | Peletiah Daniel    |
| 60. | Soloman Clark        | 83. | Jesse Downs        |
| 61. | John D. Clark        | 84. | William Davis      |
| 61. | John Clark           | 84. | Samuel Davis       |
| 62. | Joseph Clark         | 84. | Jeremiah Davis     |
| 63. | Enoch Clark          | 85. | Levi Davis         |
| 64. | Isaac Clark          | 85. | John Davis         |
| 64. | William S. Clark     | 86. | David B. Davis     |
| 65. | Jonathan Clark       | 86. | Josiah Davis       |
| 66. | Ezekiel Clark        | 87. | Rev. Jacob Davis   |
| 66. | Joel Clark           | 88. | Moses Dennett      |
| 67. | Caleb Clough         | 89. | Oliver Dennett     |
| 68. | James Colbath        | 90. | Oliver A. Dennett  |
| 68. | Benj. Colbath        | 91. | Nathaniel Dockham  |

- |      |                       |      |                    |
|------|-----------------------|------|--------------------|
| 92.  | Simon Dow             | 118. | Jonathan Emerson   |
| 93.  | John C. Dow           | 119. | Moses Emerson      |
| 93.  | Charles Dow           | 120. | Soloman Emerson    |
| 94.  | Jacob Dow             | 121. | Moses P. Emerson   |
| 94.  | John Drown            | 122. | Simeon Emerson     |
| 95.  | Richard Downing       | 123. | Charles Emerson    |
| 96.  | Walter Drake          | 124. | Timothy Emerson    |
| 97.  | John Drew             | 125. | Lemuel Evans       |
| 98.  | Joseph Drew           | 126. | John Fisher        |
| 98.  | Samuel Drew           | 126. | Lucian French      |
| 98.  | Soloman Drew          | 127. | Jonathan Foss      |
| 99.  | David Drew            | 128. | Eli H. Foss        |
| 100. | Capt. John Drew       | 129. | Samuel Foss        |
| 101. | Dea. Stephen Dudley   | 130. | Charles Foster     |
| 102. | Major Nicholas Dudley | 130. | Joseph Foye        |
| 103. | William Dudley        | 131. | Levi French        |
| 104. | Stephen Dudley        | 131. | Charles French     |
| 104. | Smith Dudley          | 132. | John Garland       |
| 105. | Jonathan Durgin       | 133. | Samuel Garland     |
| 106. | William Eastman       | 134. | John Garland       |
| 107. | Samuel Eaton          | 135. | Isaac Garland      |
| 107. | David F. Eaton        | 136. | Asa Garland        |
| 108. | Darius Eaton          | 136. | Rev. David Garland |
| 109. | Thomas Edgerly        | 137. | Rev. Enos George   |
| 110. | Benjamin Edgerly      | 138. | Charles S. George  |
| 111. | Samuel J. Edgerly     | 139. | Thomas Gerrish     |
| 112. | Silas Edgerly         | 139. | John Green         |
| 112. | Paul Edgerly          | 139. | Samuel Grant       |
| 113. | Ezekiel Edgerly       | 140. | David Goodman      |
| 114. | Reuben Edgerly        | 141. | David Goodman, Jr. |
| 114. | John Edgerly          | 142. | Moses L. Grace     |
| 115. | John Elliot           | 142. | Dr. William Glover |
| 116. | Samuel Elkins         | 143. | William P. Gray    |
| 116. | Rufus Ewers           | 144. | John Greenleaf     |
| 117. | Soloman Emerson       | 144. | Julius Gardner     |

- |      |                      |      |                     |
|------|----------------------|------|---------------------|
| 145. | Soloman Hall         | 172. | Joseph Huckins      |
| 146. | George Hall          | 172. | Silas Hill          |
| 147. | Ebenezer Hall        | 173. | Noah Huntress       |
| 148. | Joseph Hall          | 174. | Asa Hurd            |
| 149. | John Hanscom         | 175. | Thomas Huse         |
| 150. | Ebenezer Hanson      | 175. | Stephen Hood        |
| 151. | Nathaniel Hanson     | 175. | Perry Hixon         |
| 151. | Ebenezer Hanson      | 176. | Daniel Jacob        |
| 152. | Levi Hanson          | 177. | Daniel Jacob, Jr.   |
| 152. | Sidney Hanson        | 178. | Jonathan Jacob      |
| 153. | Simeon Hatch         | 179. | Rev. Joseph Jackson |
| 153. | Stephen Hussey       | 179. | Samuel James        |
| 154. | John Hawkins         | 179. | Jonathan Judkins    |
| 154. | Joseph Hawkins       | 180. | John Jenkins        |
| 155. | Dr. George Hawley    | 181. | William Jenkins     |
| 155. | John Ham             | 182. | John H. Jenkins     |
| 156. | Lemuel Hayes         | 183. | Joseph Jenkins      |
| 157. | John Heywood         | 184. | Orrin Jenkins       |
| 158. | William Hill         | 184. | Calvin Jenkins      |
| 159. | Samuel Hill          | 185. | William A. Jenkins  |
| 160. | Joseph Hillsgrove    | 186. | Stephen Jenkins     |
| 161. | Charles Hodgdon      | 187. | Samuel Jenness      |
| 162. | Charles Hodgdon, Jr. | 187. | David Johnson       |
| 163. | Benjamin Hodgdon     | 188. | Dr. Jeremiah Jewett |
| 163. | Moses Hodgdon        | 189. | Stephen Jones       |
| 164. | Timothy E. Hodgdon   | 190. | Ebenezer Jones      |
| 165. | Charles Hodgdon 3rd  | 191. | James Joy           |
| 166. | Thomas P. Hodgdon    | 191. | Rev. David Knowlton |
| 166. | James Hodgdon        | 192. | Joseph Kaime        |
| 167. | Benjamin Hoitt       | 193. | Samuel Kaime        |
| 168. | Paul G. Hoitt        | 194. | Dodivah Kaime       |
| 168. | James Hoitt          | 194. | Samuel Kelly        |
| 169. | Joseph Holmes        | 195. | John Kenison        |
| 170. | John F. Holmes       | 195. | Jonathan Kenison    |
| 171. | Ephraim Howard       | 196. | Adonijah Kenison    |

197. John Kent  
197. John Knight  
198. Cornilius Kerby  
199. Samuel B. Knowles  
200. Joseph Langley  
201. Dea. Henry Langley  
202. Joseph Leathers  
202. James Lammos  
202. Stephen Langmaid  
203. John Libby  
203. Henry Littlefield  
204. James Locke  
205. John H. Locke  
205. Phineas Locke  
206. James Locke, 3rd  
207. Enoch B. Locke  
207. James O. Locke  
208. William Lord  
209. Gilman Lougee  
210. Pitt Lougee  
210. Jonathan Lyford  
211. Meribah Marshall  
212. David McDuffee  
212. John Mudget  
212. James Marden  
213. David McNeal  
214. Joseph Meader  
214. Samuel Nute  
214. John Neal  
215. Abiathar Merrill  
216. Aaron Merrill  
216. John J. Merrill  
217. Joshua Merrill  
217. Lemuel B. Mason  
218. Clement Meserve  
219. Nathaniel Meservey  
219. John Meservey  
220. Jonathan Moore  
220. Frank Moore  
221. Hibbert Morrell  
222. Henry Munsey  
223. Henry J. Munsey  
224. Soloman Munsey  
225. Timothy Munsey  
226. Samuel Nelson  
227. William Newell  
228. Joseph Norris  
228. John Norton  
229. James Nutter  
230. Nathaniel Nutter  
231. Dea. Ebenezer Nutter  
232. Nathaniel Nutter, 3rd  
232. George Nutter  
233. James Nutter  
234. John Nutter, 4th  
235. Major John Nutter  
236. Eliphalet Nutter  
237. William Nutter  
238. Hatevil Nutter  
239. Benjamin Nutter  
240. Samuel D. Nutter  
241. Nathaniel Nutter  
242. William Nutter  
243. William S. Nutter  
244. Mathias Nutter  
245. Henry Nutter  
245. Joshua Otis  
246. John B. Parshley  
247. Joshua Parshley  
247. John L. Piper

248. Nathaniel Pease  
248. James Osgood  
249. Joseph Peavey  
249. James B. Peavey  
250. John Peavy  
250. Joseph Osborn  
251. Stephen Pendergast  
252. Soloman Pendergast  
253. Thomas Pendergast  
254. Joseph Pendergast  
254. Hoply Pettigrew  
255. Pelatiah Penney  
255. Gamaliel Pineo  
255. Robert Pitman  
256. Jonathan Perkins  
256. Jeremiah Randall  
257. Stephen Pickering  
258. Jacob Pickering  
259. James Pickering  
260. Jonathan Pickering  
261. Samuel Pickering  
262. Jacob Pickering  
262. Joseph Pickering  
263. Thomas Pierce  
264. William Pierce  
264. Henry Pierce  
265. John Pitman  
266. John Pitman, 3rd  
267. Josiah Pitman  
268. Daniel Pitman  
269. Samuel Pitman  
270. Ebenezer Pitman  
270. Joseph Prime  
271. Joseph Place  
272. Thomas Proctor  
273. Moses Rand  
274. Moses H. Rand  
274. David Rand  
275. Jonathan Roberts  
276. Noah Robinson  
276. Charles Reynolds  
277. Samuel Rollins  
277. William Rixford  
278. Noble Sackett  
279. Richard Salter  
279. Philip Swasey  
280. Edward Sanborn  
280. John Shannon  
281. Jacob Saunders  
281. William Scriggin  
282. George Seward  
283. George H. Seward  
284. Capt. Samuel Shackford  
285. Josiah Shackford  
286. Seth Shackford  
287. Richard Sinklair  
288. Richard Sinklair, Jr.  
289. John Sinklair  
289. Samuel Stevens  
289. John Swain  
290. Winthrop Smart  
291. John T. G. Smart  
291. John Shaw  
292. John Smith  
292. Thomas Swett  
293. Thomas Snell  
294. Josiah Snell  
294. Moses Stiles  
295. Ezra Straw  
296. Samuel Straw

297. John Tasker  
298. Joseph Tasker  
299. Nathaniel Tasker  
300. Paul Tasker  
301. Seth Tasker  
302. Daniel Tebbetts  
303. Ephraim Tebbetts  
304. Robert Tebbetts  
304. John Thurston  
305. Stephen Thompson  
305. William Wallace  
306. John Trickey  
306. Benjamin Trickey  
307. John Tuttle  
308. Isaac Tuttle, Jr.  
308. George Tuttle  
309. Joseph Tuttle  
310. Col. John Tuttle  
311. Thomas Tuttle  
312. Hanson Tuttle  
313. John B. Twombly  
314. William Walker  
315. Samuel Walker  
316. Joseph A. Walker  
316. Joseph Walker
317. Samuel Webster  
318. Caleb Webster  
318. John Weeks  
319. John Welch  
320. Jonathan Welch  
321. Samuel West  
321. William B. Wentworth  
322. Hazen Wheeler  
322. Joseph Wheeler  
323. John Willey  
323. Jacob Willey  
324. Thomas Willey  
324. Nicholas Wiggins  
325. Thomas Williams  
325. Dr. Simon Woodward  
326. Rev. Nathaniel Wilson  
327. Benjamin Winkley  
328. Ira Varney  
328. John C. Varney  
329. Samuel York  
330. Jonathan Young  
331. Phineas Young  
332. Jonathan Young, Jr.  
333. David Young