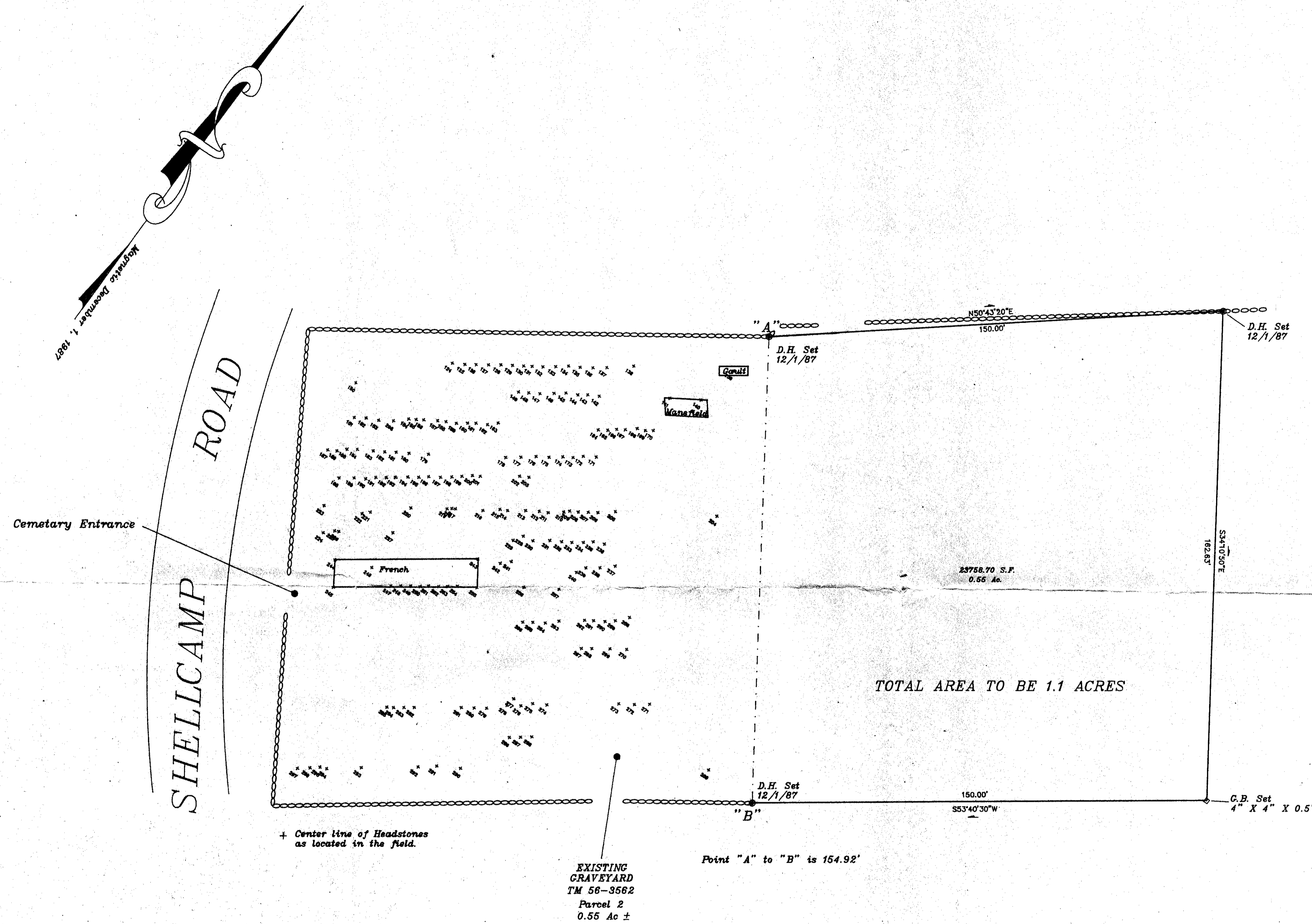


TAX MAP SKETCH LOCATION MAP

Plan of original cemetery lot layout -  
 graves numbered  
 Key attached matching grave #'s with names on each grave



**"THE BUZZELL CEMETARY"**  
 Shell Camp Road, Gilmanton,  
 County of Belknap, New Hampshire  
 Scale 1" = 20' November 7, 1989

DMC SURVEYORS  
 373 COURT STREET  
 BELKNAP COUNTY  
 LACONIA, N.H.  
 (803) 524-7655

APPROVED BY THE GILMANTON PLANNING BOARD  
 ON \_\_\_\_\_ 1988  
 CHAIRPERSON \_\_\_\_\_  
 SECRETARY \_\_\_\_\_

